

12-foot Steady Tower CL6419N and CL6419T

Specifications

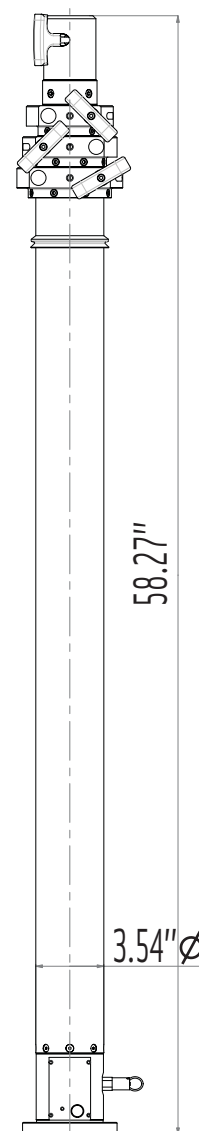
	CL6419N	CL6419T
	Non-Rotating	Manual Rotation
Extended Height :	13.1'	13.2'
Retracted Height:	58.3"	59.7"
Max top load :	55 pounds	55 pounds
Base tube diameter :	3.5" (90mm)	3.5" (90mm)
Number of sections :	Four	Four
Max wind speed :	75 mph / 372 in ²	75 mph / 372 in ²

Non-Rotating Tower		
Part Number	Description	Price
CL6419NA	Fixed (Non-Rotating)	\$ 3,764
GC.30901	Set of 3 guy collars - fixed on dia 51mm - 2"	\$ 67

Manual Rotation Tower		
Part Number	Description	Price
CL6419TA	Manual Rotating Base	\$ 4,016
GC.30802	Set of 3 rings on turnable guy collars on dia 51mm 2"	\$ 156

Tower Options		
Part Number	Description	Price
RP.30602.T (3)	Guy ropes - 32 ft (10 m)	\$ 315
PK.30701 (3)	Standard Pickets	\$ 204
HA.31301	5 lb. Hammer	\$ 21
TP.35500	Bag for carrying ropes and pickets	\$ 126
FB.33800	Lookup Light	\$ 310
BK.30104	Lower Mounting Bracket	\$ 62
BK.30055	Square Roof Bracket	\$ 199
BK.30204	Upper Mounting Bracket	\$ 125
MS.32302	Reversed micro-switch	\$ 131

Internal Cable Options	
See Page 58	Cable must be less than 1.7" Diameter



Tower Model CL6419N

Lights, Cameras, and Communications

We're an OEM

Tempest Fireco Towers is an OEM for all major lighting manufacturers as well as many camera and communication manufacturers. Choose from popular brand names such as Havis-Shields, Fire Research Corporation, Tele-Lite, and Intec or R-Vision cameras, and also from our own Fireco brand of quality lighting products.

17-foot Steady Tower CL6421N and CL6421T

Specifications

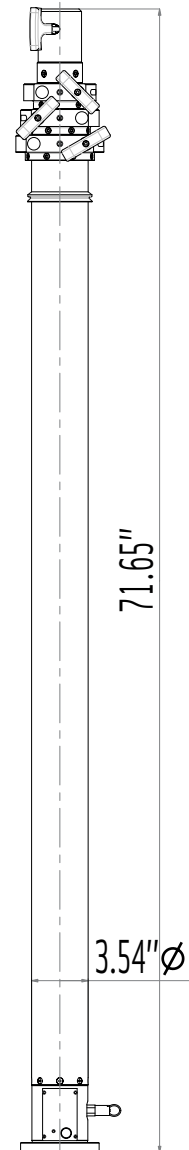
	CL6421N	CL6421T
	Non-Rotating	Manual Rotation
Extended Height :	17.3'	17.4'
Retracted Height:	72.3"	73.7"
Max top load :	55 pounds	55 pounds
Base tube diameter :	3.5" (90mm)	3.5" (90mm)
Number of sections :	Four	Four
Max wind speed :	75 mph / 372 in ²	75 mph / 372 in ²

Non-Rotating Tower		
Part Number	Description	Price
CL6421NA	Fixed (Non-Rotating)	\$ 3,922
GC.30902	Set of 3 guy collars - fixed on dia 51mm - 2"	\$ 67

Manual Rotation Tower		
Part Number	Description	Price
CL6421TA	Manual Rotating Base	\$ 4,174
GC.30802	Set of 3 rings on rotating guy collars on dia 51mm - 2"	\$ 156

Tower Options		
Part Number	Description	Price
RP.30602.T (3)	Guy ropes - 32 ft (10 m)	\$ 315
PK.30701 (3)	Standard Pickets	\$ 204
HA.31301	5 lb. Hammer	\$ 21
TP.35500	Bag for carrying ropes and pickets	\$ 126
FB.33800	Lookup Light	\$ 310
BK.30104	Lower Mounting Bracket	\$ 62
BK.30055	Square Roof Bracket	\$ 199
BK.30204	Upper Mounting Bracket	\$ 125
MS.32302	Reversed micro-switch	\$ 131

Internal Cable Options	
See Page 58	Cable must be less than 1.7" Diameter



Tower Model CL6421N

Product Fact

Your Investment is Protected

All Tempest Fireco Pneumatic Telescoping Towers are equipped with our exclusive keyway system to prevent tower rotation and reduce the risk of damage in windy conditions.

19-foot Steady Tower

CS6520N and CS6520T

Specifications

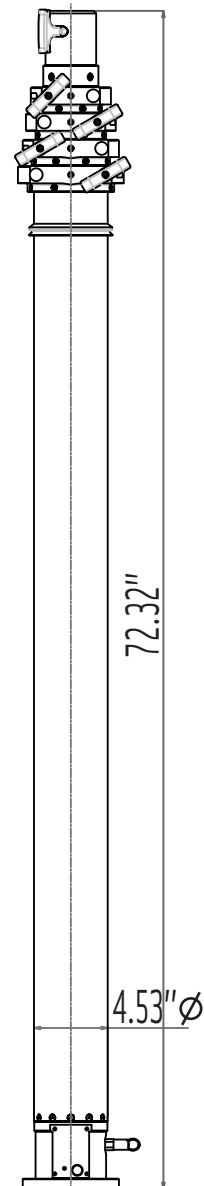
	CS6520N	CS6520T
	Non-Rotating	Manual Rotation
Extended Height :	19.9'	20'
Retracted Height:	72.3"	73.7"
Max top load :	110 lbs.	110 lbs.
Base tube diameter :	4.53" (115mm)	4.53" (115mm)
Number of sections :	Five	Five
Max wind speed :	75 mph / 740 in ²	75 mph / 740 in ²

Non-Rotating Tower		
Part Number	Description	Price
CS6520NA	Fixed (Non-Rotating)	\$ 4,862
GC.30903	Set of 3 guy collars - fixed on dia 64mm 2.52"	\$ 67

Manual Rotation Tower		
Part Number	Description	Price
CS6520TA	Manual Rotating Base	\$ 5,128
GC.30803	Set of 3 rings on turnable guy collars on dia 64mm 2.52"	\$ 185

Tower Options		
Part Number	Description	Price
RP.30602.T (3)	Guy ropes - 32 ft (10 m)	\$ 315
PK.30701 (3)	Standard Pickets	\$ 204
HA.31301	5 lb. Hammer	\$ 21
TP.35500	Bag for carrying ropes and pickets	\$ 126
FB.33800	Lookup Light	\$ 310
BK.30106	Lower Mounting Bracket	\$ 70
BK.30056	Square Roof Bracket	\$ 199
BK.30206	Upper Mounting Bracket	\$ 131
MS.32302	Reversed micro-switch	\$ 131

Internal Cable Options	
See Page 58	Cable must be less than 2.2" Diameter



Tower Model CS6520N

Lights, Cameras, and Communications

We're an OEM

Tempest Fireco Towers is an OEM for all major lighting manufacturers as well as many camera and communication manufacturers. Choose from popular brand names such as Havis-Shields, Fire Research Corporation, Tele-Lite, and Intec or R-Vision cameras, and also from our own Fireco brand of quality lighting products.

26-foot Steady Tower CH6718N and CH6718T

Specifications

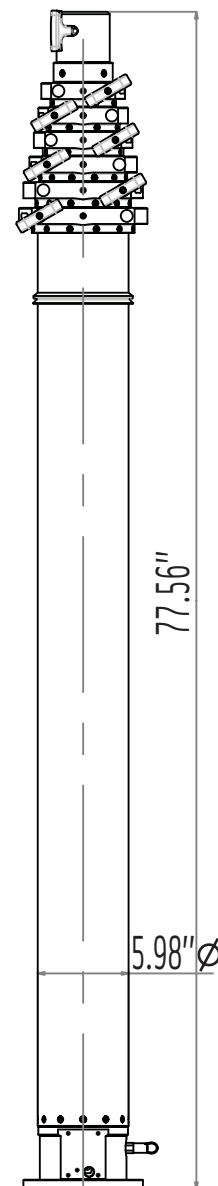
	CH6718N	CH6718T
	Non-Rotating	Manual Rotation
Extended Height :	26.5'	26.7'
Retracted Height:	77.6"	79"
Max top load :	265 lbs.	265 lbs.
Base tube diameter :	5.98" (152mm)	5.98" (152mm)
Number of sections :	Seven	Seven
Max wind speed :	68 mph / 775 in ²	68 mph / 775 in ²

Non-Rotating Tower		
Part Number	Description	Price
CH6718NA	Fixed (Non-Rotating)	\$ 6,715
GC.30904	Set of 3 guy collars - fixed on dia 77mm 3"	\$ 67

Manual Rotation Tower		
Part Number	Description	Price
CH6718TA	Manual Rotating Base	\$ 7,005
GC.30804	Set of 3 rings on turnable guy collars on dia 77mm 3"	\$ 201

Tower Options		
Part Number	Description	Price
RP.30603.T (3)	Guy rope - 49 ft (15 m)	\$ 342
PK.30701 (3)	Standard Picket	\$ 204
HA.31301	5 lb. Hammer	\$ 21
TP.35500	Bags for carrying ropes and pickets	\$ 126
FB.33800	Lookup Light	\$ 310
BK.30107	Lower Mounting Bracket	\$ 79
BK.30057	Square Roof Bracket	\$ 229
BK.30207	Upper Mounting Bracket	\$ 148
MS.32302	Reversed micro-switch	\$ 131

Internal Cable Options	
See Page 58	Cable must be less than 2.6" Diameter



Tower Model CH6718N

Product Fact

Internal Cables

Many towers are available with internal cables. Towers with internal cables feature standard power junction boxes at both the top and base of the tower.

33-foot Steady Tower CH6805N and CH6805T

Specifications

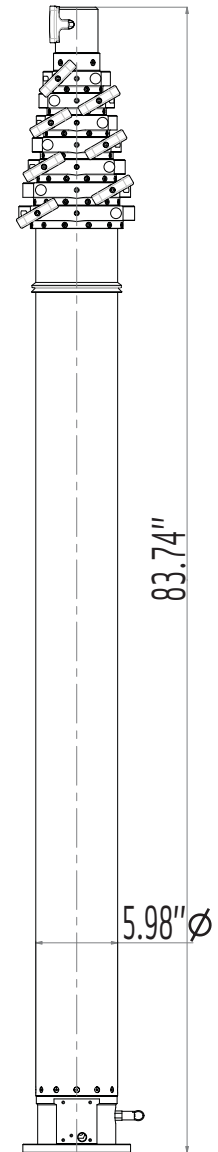
	CH6805N	CH6805T
	Non-Rotating	Manual Rotation
Extended Height :	34.1'	34.2'
Retracted Height:	83.8"	85.2"
Max top load :	176 lbs.	176 lbs.
Base tube diameter :	5.98" (152mm)	5.98" (152mm)
Number of sections :	Eight	Eight
Max wind speed :	62 mph / 775 in ²	62 mph / 775 in ²

Non-Rotating Tower		
Part Number	Description	Price
CH6805NA	Fixed (Non-Rotating)	\$ 7,536
GC.30903	Set of 3 guy collars - fixed on dia 64mm 2.52"	\$ 67

Manual Rotation Tower		
Part Number	Description	Price
CH6805TA	Manual Rotating Base	\$ 7,826
GC.30803	Set of 3 rings on turnable guy collars on dia 64mm 2.52"	\$ 185

Tower Options		
Part Number	Description	Price
RP.30603.T (3)	Guy rope - 49 ft (15 m)	\$ 342
PK.30701 (3)	Standard Picket	\$ 204
HA.31301	5 lb. Hammer	\$ 21
TP.35500	Bags for carrying ropes and pickets	\$ 126
FB.33800	Lookup Light	\$ 310
BK.30107	Lower Mounting Bracket	\$ 79
BK.30057	Square Roof Bracket	\$ 229
BK.30207	Upper Mounting Bracket	\$ 148
MS.32302	Reversed micro-switch	\$ 131

Internal Cable Options	
See Page 58	Cable must be less than 2.2" Diameter



Tower Model CH6805N

We're Here to Assist!

Customer Service Hours

Contact a Tempest Fireco Towers Customer Service Representative or Sales Team member for assistance with quotes and specifications. Customer Service is available Monday through Friday, 7am-5pm, PST.

41-foot Steady Tower CX7103N and CX7103T

Specifications

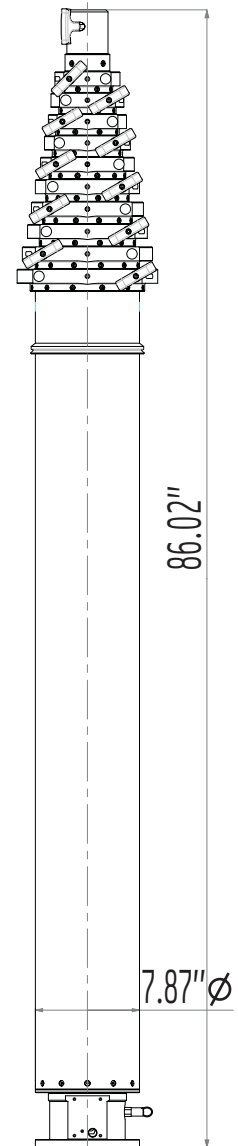
	CX7103N	CX7103T
	Non-Rotating	Manual Rotation
Extended Height :	41.4'	41.5'
Retracted Height:	86.1"	87.4"
Max top load :	176 lbs.	176 lbs.
Base tube diameter :	7.87" (200mm)	7.87" (200mm)
Number of sections :	Eleven	Eleven
Max wind speed :	62 mph / 740 in ²	62 mph / 740 in ²

Non-Rotating Tower		
Part Number	Description	Price
CX7103NA	Fixed (Non-Rotating)	\$ 12,572
GC.30903	Set of 3 guy collars - fixed on dia 64mm 2.52" (top)	\$ 67
GC.30909	Set of 3 guy collars - fixed on dia 140mm 5.52" (middle)	\$ 67

Manual Rotation Tower		
Part Number	Description	Price
CX7103TA	Manual Rotating Base	\$ 12,990
GC.30803	Set of 3 rings on turnable guy collars on dia 64mm 2.52" (top)	\$ 185
GC.30809	Set of 3 rings on turnable guy collars on dia 140m 5.52" (middle)	\$ 286

Tower Options		
Part Number	Description	Price
RP.30604.T (3)	Guy rope - 65 ft (20 m) at top	\$ 411
RP.30602.T (3)	Guy rope - 32 ft (10 m) at middle	\$ 315
PK.30701 (3)	Standard Picket	\$ 204
HA.31301	5 lb. Hammer	\$ 21
TP.35500	Bags for carrying ropes and pickets	\$ 126
FB.33800	Lookup Light	\$ 310
BK.30107	Lower Mounting Bracket	\$ 79
BK.30058	Square Roof Bracket	\$ 229
BK.30208	Upper Mounting Bracket	\$ 188
MS.32302	Reversed micro-switch	\$ 131

Internal Cable Options	
See Page 58	Cable must be less than 2.2" Diameter



Tower Model CX7103N

Product Fact

Ratings and Certifications

The Fireco Components factory in Italy, where all Tempest Fireco Towers are manufactured, is ISO9001 operations & NATO rated. Tempest Fireco Towers received UL certification of NFPA-1901 compliance.