

2300 Series

41-foot Tower, CX4103NZ (priced with 4 x 750W 120V Halogen)

Specifications

Extended Height :	41'	\$ 10,424
Retracted Height:	80"	
Max top load :	176 lbs.	
Base tube diameter :	7.87" (200mm)	
Number of sections :	Eleven	
Max wind speed :	62 mph @ 742 sq. in.	

Tower Features Included

Part Number	Description	Price
TT.31621	Non-Dual Tilt and Turn 12V STANDARD	\$ 2,690
RC.31747	Wireless Remote Control	\$ 429
RC.31746	Wired Remote Control	\$ 1,377
MS.32301.MI	Tower Extension Warning Switch	\$ 131
FD.34125/750.110.T	FIRECO 4 x 750W 120V Halogen Lights	\$ 874
FB.33800	Lookup Light	\$ 310
CODE Z	Cable Z: (9)16ga + (13)24ga	\$ 628
BK.30208.R	Upper Mounting Bracket-reinforced	\$ 253
BK.30107	Lower Mounting Bracket	\$ 79

Package List Price: \$17,195

OPTIONAL 4 x 750W 120V Lighting

Part Number	Description	Add
OPA100-S75 (4)	Fire Research Optimum	\$ 841
KR-36-WB (4)	Havis Shields Magnafire	\$ 692

OPTIONAL Dual Tilt and Turn

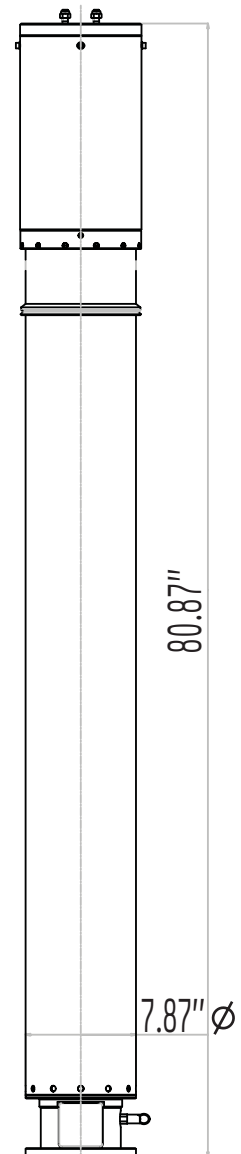
Part Number	Description	Add
TT.31641	DUAL Tilt/Turn 12V STANDARD	\$ 1,067
RC.31748	Wired Remote Control 3 motors	
RC.31749	Wireless Remote Control 3 motors	

OPTIONAL Smart Remote Control

Part Number	Description	Add
RC.31756	SMART Remote Control (non-dual tilt)	\$ 100
RC.31758	SMART Remote Control (dual tilt)	\$ 150

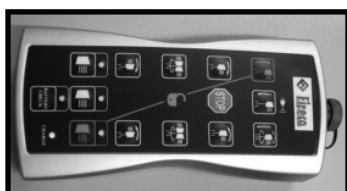
OPTIONAL Mounting Bracket

Part Number	Description	Add
BK.30058	Square Roof Bracket	\$ 50

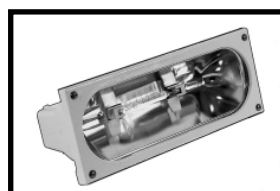


Tower Model CX4103NZ

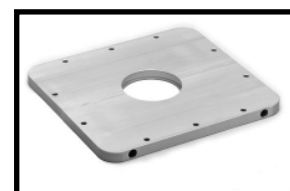
Featured Options



Smart Remote Dual Tilt RC.31758



Havis Shields Magnafire KR-36-WB (4)



Optional BK.30058

41-foot Tower, CX4103NZ (priced with 6 x 750W 120V Halogen)

Specifications

Extended Height :	41'	\$ 10,424
Retracted Height:	80"	
Max top load :	176 lbs.	
Base tube diameter :	7.87" (200mm)	
Number of sections :	Eleven	
Max wind speed :	62 mph @ 742 sq. in.	

Tower Features Included

Part Number	Description	Price
TT.31621	Non-Dual Tilt and Turn 12V STANDARD	\$ 2,690
RC.31747	Wireless Remote Control	\$ 429
RC.31746	Wired Remote Control	\$ 1,377
KR-36-WB (6)	Havis Shields 6 x 750W 120V Halogen Lights	\$ 2,265
MS.32301.MI	Tower Extension Warning Switch	\$ 131
FB.33800	Lookup Light	\$ 310
CODE Z	Cable Z: (9)16ga + (13)24ga	\$ 628
BK.30208.R	Upper Mounting Bracket-reinforced	\$ 253
BK.30107	Lower Mounting Bracket	\$ 70

Package List Price: \$18,577

OPTIONAL 6 x 750W 120V Lighting

Part Number	Description	Add
OPA100-S75 (6)	Fire Research Optimum	\$ 223

OPTIONAL Dual Tilt and Turn

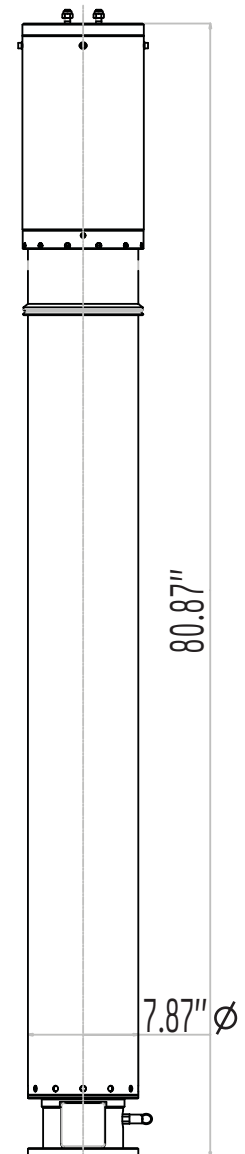
Part Number	Description	Add
TT.31641	DUAL Tilt/Turn 12V STANDARD	\$ 1,067
RC.31748	Wired Remote Control 3 motors	
RC.31749	Wireless Remote Control 3 motors	

OPTIONAL Smart Remote Control

Part Number	Description	Add
RC.31756	SMART Remote Control (non-dual tilt)	\$ 100
RC.31758	SMART Remote Control (dual tilt)	\$ 150

OPTIONAL Mounting Bracket

Part Number	Description	Add
BK.30058	Square Roof Bracket	\$ 50



Tower Model CX4103NZ

Product Fact

Incremental Extension

Tower can be positioned at any increment to full height without first reaching full height extension.

2300 Series

41-foot Tower, CX4103NZ

(priced with 4 x 900W 240V)

Specifications

Extended Height :	41'	\$ 10,424
Retracted Height:	80"	
Max top load :	176 lbs.	
Base tube diameter :	7.87" (200mm)	
Number of sections :	Eleven	
Max wind speed :	62 mph @ 742 sq. in.	

Standard Tower Features

Part Number	Description	Price
TT.31621	Non-Dual Tilt and Turn 12V STANDARD	\$ 2,690
RC.31747	Wireless Remote Control	\$ 429
RC.31746	Wired Remote Control	\$ 1,377
KR-31-WB (4)	Havis Shields 4 x 900W 240V Lights	\$ 1,815
MS.32301.MI	Tower Extension Warning Switch	\$ 131
FB.33800	Lookup Light	\$ 310
CODE Z	Cable Z: (9)16ga + (13)24ga	\$ 628
BK.30208.R	Upper Mounting Bracket-reinforced	\$ 253
BK.30107	Lower Mounting Bracket	\$ 70

Package List Price: \$18,127

OPTIONAL 4 x 900W 240V Lighting

Part Number	Description	Add
OPA100-R90 (4)	Fire Research Optimum	\$ 254

OPTIONAL Dual Tilt and Turn

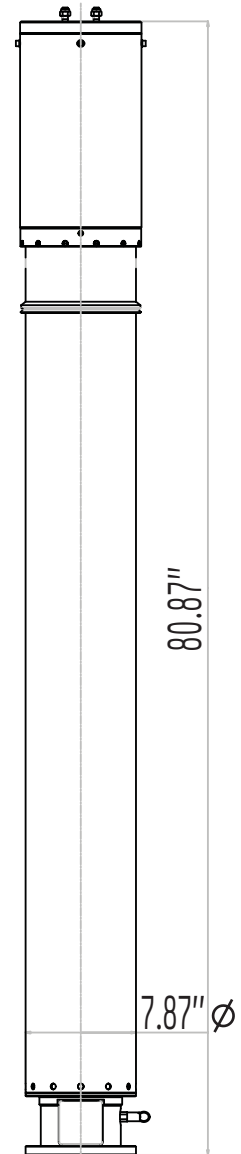
Part Number	Description	Add
TT.31641	DUAL Tilt/Turn 12V STANDARD	\$ 1,067
RC.31748	Wired Remote Control 3 motors	
RC.31749	Wireless Remote Control 3 motors	

OPTIONAL Smart Remote Control

Part Number	Description	Add
RC.31756	SMART Remote Control (non-dual tilt)	\$ 100
RC.31758	SMART Remote Control (dual tilt)	\$ 150

OPTIONAL Mounting Bracket

Part Number	Description	Add
BK.30058	Square Roof Bracket	\$ 50



Tower Model CX4103NZ

Lights, Cameras, and Communications

We're an OEM

Tempest Fireco Towers is an OEM for all major lighting manufacturers as well as many camera and communication manufacturers. Choose from popular brand names such as Havis-Shields, Fire Research Corporation, Tele-Lite, and Intec or R-Vision cameras, and also from our own Fireco brand of quality lighting products.

41-foot Tower, CX4103NZ (priced with 6 x 900W 240V Halogen)

Specifications

Extended Height :	41'	\$ 10,424
Retracted Height:	80"	
Max top load :	176 lbs.	
Base tube diameter :	7.87" (200mm)	
Number of sections :	Eleven	
Max wind speed :	62 mph @ 742 sq. in.	

Standard Tower Features

Part Number	Description	Price
TT.31621	Non-Dual Tilt and Turn 12V STANDARD	\$ 2,690
RC.31747	Wireless Remote Control	\$ 429
RC.31746	Wired Remote Control	\$ 1,377
KR-31-WB (6)	Havis Shields 6 x 900W 240V Halogen Lights	\$ 2,639
MS.32301.MI	Tower Extension Warning Switch	\$ 131
FB.33800	Lookup Light	\$ 310
CODE Z	Cable Z: (9)16ga + (13)24ga	\$ 628
BK.30208.R	Upper Mounting Bracket-reinforced	\$ 253
BK.30107	Lower Mounting Bracket	\$ 70

Package List Price: \$18,951

OPTIONAL 6 x 900W 240V Lighting

Part Number	Description	Add
OPA100-R90 (6)	Fire Research Optimum	\$ 380

OPTIONAL Dual Tilt and Turn

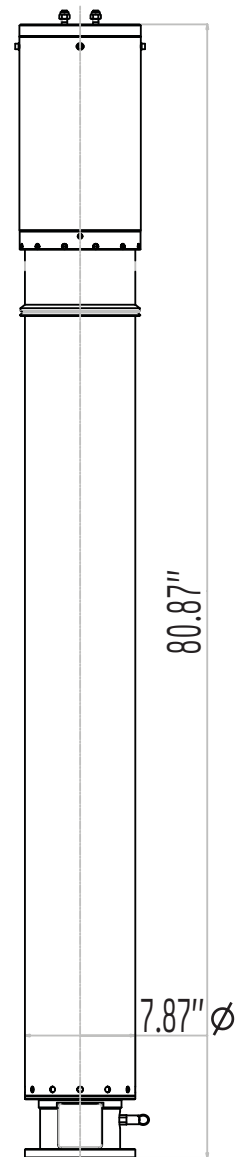
Part Number	Description	Add
TT.31641	DUAL Tilt/Turn 12V STANDARD	\$ 1,067
RC.31748	Wired Remote Control 3 motors	
RC.31749	Wireless Remote Control 3 motors	

OPTIONAL Smart Remote Control

Part Number	Description	Add
RC.31756	SMART Remote Control (non-dual tilt)	\$ 100
RC.31758	SMART Remote Control (dual tilt)	\$ 150

OPTIONAL Mounting Bracket

Part Number	Description	Add
BK.30058	Square Roof Bracket	\$ 50



Tower Model CX4103NZ

We're Here to Assist!

Customer Service Hours

Contact a Tempest Fireco Towers Customer Service Representative or Sales Team member for assistance with quotes and specifications. Customer Service is available Monday through Friday, 7am-5pm, PST.

2300 Series

41-foot Tower, CX4103NW (priced with 2 x 1000W 240V Metal Halide)

Specifications

Extended Height :	41'	\$ 10,424
Retracted Height:	80"	
Max top load :	176 lbs.	
Base tube diameter :	7.87" (200mm)	
Number of sections :	Eleven	
Max wind speed :	62 mph @ 742 sq. in.	

Standard Tower Features

Part Number	Description	Price
TT.31621	Non-Dual Tilt and Turn 12V STANDARD	\$ 2,690
RC.31747	Wireless Remote Control	\$ 429
RC.31746	Wired Remote Control	\$ 1,377
MS.32301.MI	Tower Extension Warning Switch	\$ 131
FD.34321.T.ST	FIRECO 2 x 1000W 240V MH Lights	\$ 3,425
FB.33800	Lookup Light	\$ 310
CODE W	Cable W: 11x16awg + 8x20awg + 4x26awg + MICROCOAX 75 Ohm	\$ 332
BK.30208.R	Upper Mounting Bracket-reinforced	\$ 253
BK.30107	Lower Mounting Bracket	\$ 70

Package List Price: \$19,441

OPTIONAL Dual Tilt and Turn

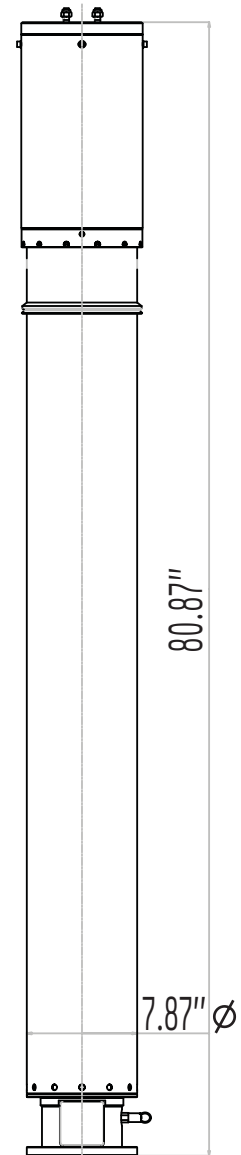
Part Number	Description	Add
TT.31641	DUAL Tilt/Turn 12V STANDARD	\$ 1,067
RC.31748	Wired Remote Control 3 motors	
RC.31749	Wireless Remote Control 3 motors	

OPTIONAL Smart Remote Control

Part Number	Description	Add
RC.31756	SMART Remote Control (non-dual tilt)	\$ 100
RC.31758	SMART Remote Control (dual tilt)	\$ 150

OPTIONAL Mounting Bracket

Part Number	Description	Add
BK.30058	Square Roof Bracket	\$ 50

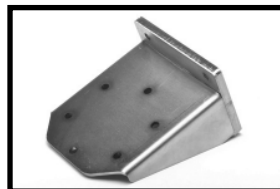


Tower Model CX4103NW

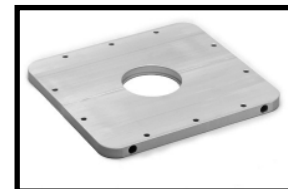
Featured Mounting Brackets



Standard BK.30208.R



Standard BK.30107



Optional BK.30058

41-foot Tower, CX4103NW (priced with 4 x 1000W 240V Metal Halide)

Specifications

Extended Height :	41'	\$ 10,424
Retracted Height:	80"	
Max top load :	176 lbs.	
Base tube diameter :	7.87" (200mm)	
Number of sections :	Eleven	
Max wind speed :	62 mph @ 742 sq. in.	

Standard Tower Features

Part Number	Description	Price
TT.31625	DUAL Tilt and Turn 12V HEAVY	\$ 4,734
RC.31749	Wireless Remote Control 3 motors	\$ 479
RC.31748	Wired Remote Control 3 motors	\$ 1,536
MS.32301.MI	Tower Extension Warning Switch	\$ 131
FD.34334.T.ST	FIRECO 4 x 1000w 240V MH Lights	\$ 6,851
FB.33800	Lookup Light	\$ 310
CODE W	Cable W: 11x16awg + 8x20awg + 4x26awg + MICROCOAX 75 Ohm	\$ 332
BK.30208.R	Upper Mounting Bracket-reinforced	\$ 253
BK.30107	Lower Mounting Bracket	\$ 79

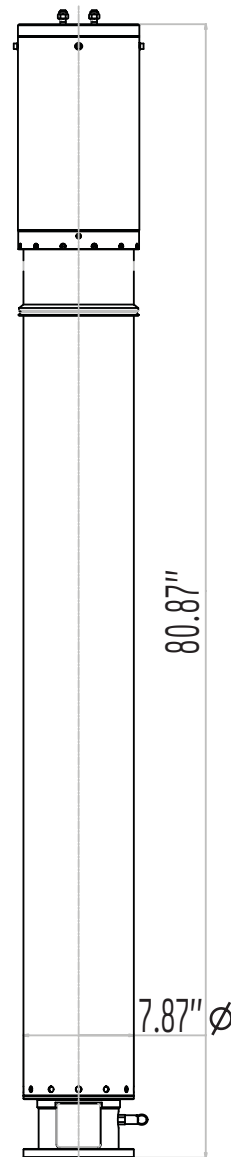
Package List Price: \$25,129

OPTIONAL Smart Remote Control

Part Number	Description	Add
RC.31756	SMART Remote Control (non-dual tilt)	\$ 100
RC.31758	SMART Remote Control (dual tilt)	\$ 150

OPTIONAL Mounting Bracket

Part Number	Description	Add
BK.30058	Square Roof Bracket	\$ 50



Tower Model CX4103NW

Product Fact

Corrosion Resistant

All Tempest Fireco Towers are made from precision machined tubes of corrosion resistant anodized aluminum.

2300 Series

41-foot Tower, CX4103NZ (priced with 2 x 1500W 240V Halogen)

Specifications

Extended Height :	41'	\$ 10,424
Retracted Height:	80"	
Max top load :	176 lbs.	
Base tube diameter :	7.87" (200mm)	
Number of sections :	Eleven	
Max wind speed :	62 mph @ 742 sq. in.	

Standard Tower Features

Part Number	Description	Price
TT.31621	Non-Dual Tilt and Turn 12V STANDARD	\$ 2,690
RC.31747	Wireless Remote Control	\$ 429
RC.31746	Wired Remote Control	\$ 1,377
MS.32301.MI	Tower Extension Warning Switch	\$ 131
FD.34154.TO	FIRECO 2 x 1500W 240V Halogen Omega Lights	\$ 475
FB.33800	Lookup Light	\$ 310
CODE Z	Cable Z: (9)16ga + (13)24ga	\$ 628
BK.30208.R	Upper Mounting Bracket-reinforced	\$ 253
BK.30107	Lower Mounting Bracket	\$ 70

Package List Price: \$16,787

OPTIONAL 2 x 1500W 240V Lighting

Part Number	Description	Add
OPA100-M15 (2)	Fire Research Optimum	\$ 643

OPTIONAL Dual Tilt and Turn

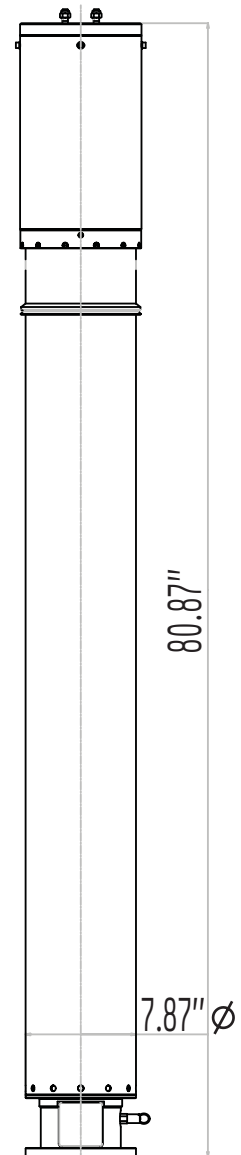
Part Number	Description	Add
TT.31641	DUAL Tilt/Turn 12V STANDARD	\$ 1,067
RC.31748	Wired Remote Control 3 motors	
RC.31749	Wireless Remote Control 3 motors	

OPTIONAL Smart Remote Control

Part Number	Description	Add
RC.31756	SMART Remote Control (non-dual tilt)	\$ 100
RC.31758	SMART Remote Control (dual tilt)	\$ 150

OPTIONAL Mounting Bracket

Part Number	Description	Add
BK.30058	Square Roof Bracket	\$ 50



Tower Model CX4103NZ

Pricing Structure

Here's how it works...

Locate the desired Tempest Fireco Tower in this catalog. The package list price is shown under the "Standard Tower Features" data table on each product page. Keep the package as is, or select from the options list below and add those product option prices to the package price.

41-foot Tower, CX4103NZ (priced with 4 x 1500W 240V Halogen)

Specifications

Extended Height :	41'	\$ 10,424
Retracted Height:	80"	
Max top load :	176 lbs.	
Base tube diameter :	7.87" (200mm)	
Number of sections :	Eleven	
Max wind speed :	62 mph @ 742 sq. in.	

Standard Tower Features

Part Number	Description	Price
TT.31621	Non-Dual Tilt and Turn 12V STANDARD	\$ 2,690
RC.31747	Wireless Remote Control	\$ 429
RC.31746	Wired Remote Control	\$ 1,377
MS.32301.MI	Tower Extension Warning Switch	\$ 131
FD.34156.T	FIRECO 4 x 1500W 240V Halogen Lights	\$ 834
FB.33800	Lookup Light	\$ 310
CODE Z	Cable Z: (9)16ga + (13)24ga	\$ 628
BK.30208.R	Upper Mounting Bracket-reinforced	\$ 253
BK.30107	Lower Mounting Bracket	\$ 70

Package List Price: \$17,146

OPTIONAL 4 x 1500W 240V Lighting

Part Number	Description	Add
OPA100-M15 (4)	Fire Research Optimum	\$ 1,235

OPTIONAL Dual Tilt and Turn

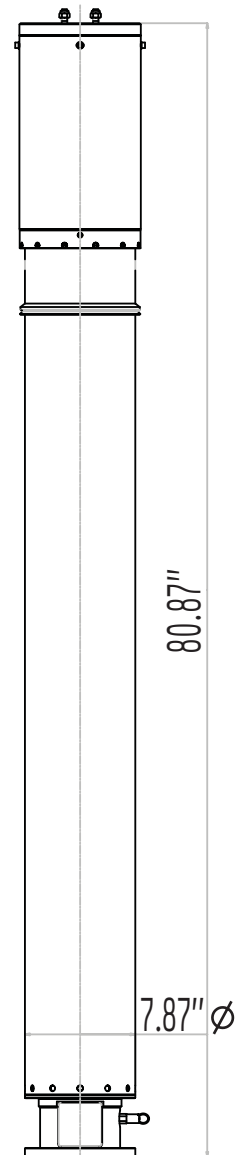
Part Number	Description	Add
TT.31641	DUAL Tilt/Turn 12V STANDARD	\$ 1,067
RC.31748	Wired Remote Control 3 motors	
RC.31749	Wireless Remote Control 3 motors	

OPTIONAL Smart Remote Control

Part Number	Description	Add
RC.31756	SMART Remote Control (non-dual tilt)	\$ 100
RC.31758	SMART Remote Control (dual tilt)	\$ 150

OPTIONAL Mounting Bracket

Part Number	Description	Add
BK.30058	Square Roof Bracket	\$ 50



Tower Model CX4103NZ

We're Here to Assist!

Customer Service Hours

Contact a Tempest Fireco Towers Customer Service Representative or Sales Team member for assistance with quotes and specifications. Customer Service is available Monday through Friday, 7am-5pm, PST.

2300 Series

41-foot Tower, CX4103NZ (priced with 6 x 1500W 240V Halogen)

Specifications

Extended Height :	41'	\$ 10,424
Retracted Height:	80"	
Max top load :	176 lbs.	
Base tube diameter :	7.87" (200mm)	
Number of sections :	Eleven	
Max wind speed :	62 mph @ 742 sq. in.	

Standard Tower Features

Part Number	Description	Price
TT.31621	Non-Dual Tilt and Turn 12V STANDARD	\$ 2,690
RC.31747	Wireless Remote Control	\$ 429
RC.31746	Wired Remote Control	\$ 1,377
MS.32301.MI	Tower Extension Warning Switch	\$ 131
FD.34159.T	FIRECO 6 x 1500W 240V Halogen Lights	\$ 1,109
FB.33800	Lookup Light	\$ 310
CODE Z	Cable Z: (9)16ga + (13)24ga	\$ 628
BK.30208.R	Upper Mounting Bracket-reinforced	\$ 253
BK.30107	Lower Mounting Bracket	\$ 70

Package List Price: \$17,421

OPTIONAL 6 x 1500W 240V Lighting

Part Number	Description	Add
OPA100-M15 (6)	Fire Research Optimum	\$ 1,910

OPTIONAL Dual Tilt and Turn

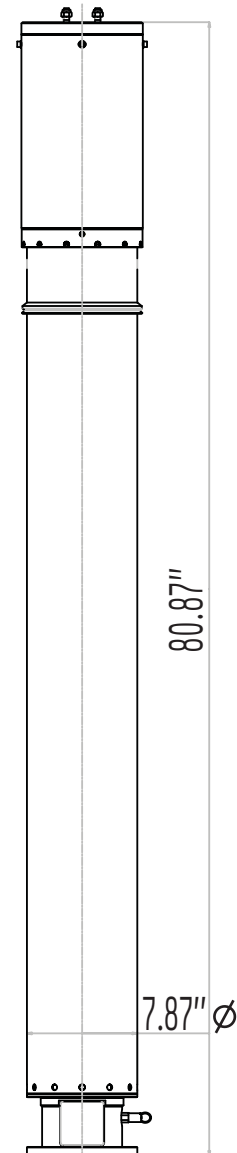
Part Number	Description	Add
TT.31641	DUAL Tilt/Turn 12V STANDARD	\$ 1,067
RC.31748	Wired Remote Control 3 motors	
RC.31749	Wireless Remote Control 3 motors	

OPTIONAL Smart Remote Control

Part Number	Description	Add
RC.31756	SMART Remote Control (non-dual tilt)	\$ 100
RC.31758	SMART Remote Control (dual tilt)	\$ 150

OPTIONAL Mounting Bracket

Part Number	Description	Add
BK.30058	Square Roof Bracket	\$ 50

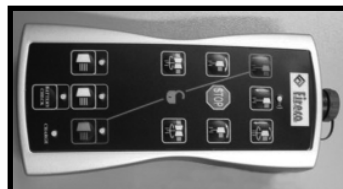


Tower Model CX4103NZ

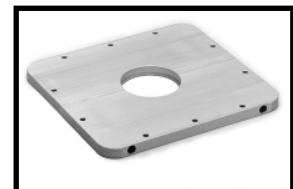
Featured Options



Fire Research Optimum OPA100-M15 (6)



Smart Remote Non-Dual Tilt RC.31756



Square Roof Bracket BK.30058

41-foot Steady Tower CX7103N and CX7103T

Specifications

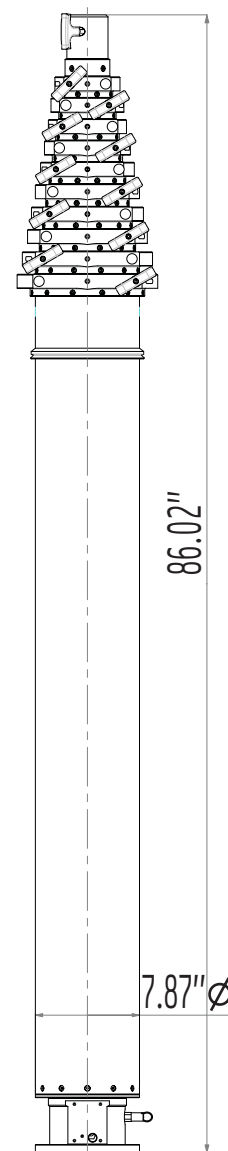
	CX7103N	CX7103T
	Non-Rotating	Manual Rotation
Extended Height :	41.4'	41.5'
Retracted Height:	86.1"	87.4"
Max top load :	176 lbs.	176 lbs.
Base tube diameter :	7.87" (200mm)	7.87" (200mm)
Number of sections :	Eleven	Eleven
Max wind speed :	62 mph / 740 in ²	62 mph / 740 in ²

Non-Rotating Tower		
Part Number	Description	Price
CX7103NA	Fixed (Non-Rotating)	\$ 12,572
GC.30903	Set of 3 guy collars - fixed on dia 64mm 2.52" (top)	\$ 67
GC.30909	Set of 3 guy collars - fixed on dia 140mm 5.52" (middle)	\$ 67

Manual Rotation Tower		
Part Number	Description	Price
CX7103TA	Manual Rotating Base	\$ 12,990
GC.30803	Set of 3 rings on turnable guy collars on dia 64mm 2.52" (top)	\$ 185
GC.30809	Set of 3 rings on turnable guy collars on dia 140m 5.52" (middle)	\$ 286

Tower Options		
Part Number	Description	Price
RP.30604.T (3)	Guy rope - 65 ft (20 m) at top	\$ 411
RP.30602.T (3)	Guy rope - 32 ft (10 m) at middle	\$ 315
PK.30701 (3)	Standard Picket	\$ 204
HA.31301	5 lb. Hammer	\$ 21
TP.35500	Bags for carrying ropes and pickets	\$ 126
FB.33800	Lookup Light	\$ 310
BK.30107	Lower Mounting Bracket	\$ 79
BK.30058	Square Roof Bracket	\$ 229
BK.30208	Upper Mounting Bracket	\$ 188
MS.32302	Reversed micro-switch	\$ 131

Internal Cable Options	
See Page 58	Cable must be less than 2.2" Diameter



Tower Model CX7103N

Product Fact

Ratings and Certifications

The Fireco Components factory in Italy, where all Tempest Fireco Towers are manufactured, is ISO9001 operations & NATO rated. Tempest Fireco Towers received UL certification of NFPA-1901 compliance.