

# 2200 Series

## 33-foot Tower, CH3805NZ (priced with 4 x 750W 120V Halogen)

### Specifications

Extended Height :	33' 9"	\$ 6,116
Retracted Height:	79"	
Max top load :	176 lbs.	
Base tube diameter :	5.98" (152mm)	
Number of sections :	Eight	
Max wind speed :	68 mph @ 742 sq. in.	

### Standard Tower Features

Part Number	Description	Price
TT.31621	Non-Dual Tilt and Turn 12V STANDARD	\$ 2,690
RC.31747	Wireless Remote Control	\$ 429
RC.31746	Wired Remote Control	\$ 1,377
MS.32301.MI	Tower Extension Warning Switch	\$ 131
FD.34125/750.110.T	FIRECO 4 x 750W 120V Halogen Lights	\$ 874
FB.33800	Lookup Light	\$ 310
CODE Z	Cable Z: (9)16ga + (13)24ga	\$ 302
BK.30207	Upper Mounting Bracket	\$ 148
BK.30107	Lower Mounting Bracket	\$ 79

**Package List Price: \$12,456**

### OPTIONAL 4 x 750W 120V Lighting

Part Number	Description	Add
OPA100-S75 (4)	Fire Research Optimum	\$ 841
KR-36-WB (4)	Havis Shields Magnafire	\$ 692

### OPTIONAL Dual Tilt and Turn

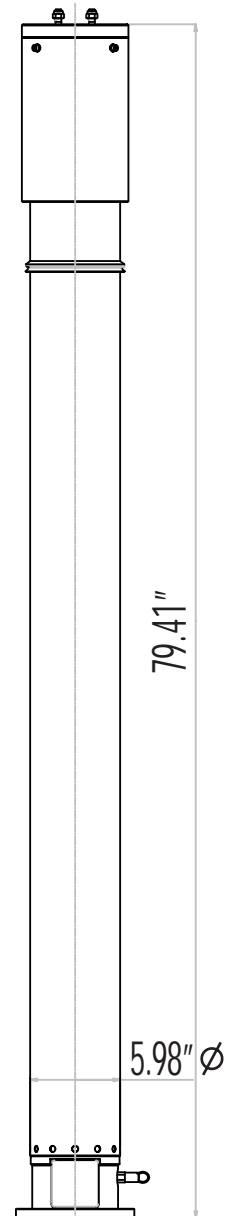
Part Number	Description	Add
TT.31641	DUAL Tilt/Turn 12V STANDARD	\$ 1,067
RC.31748	Wired Remote Control 3 motors	
RC.31749	Wireless Remote Control 3 motors	

### OPTIONAL Smart Remote Control

Part Number	Description	Add
RC.31756	SMART Remote Control (non-dual tilt)	\$ 100
RC.31758	SMART Remote Control (dual tilt)	\$ 150

### OPTIONAL Mounting Bracket

Part Number	Description	Add
BK.30057	Square Roof Bracket	\$ 50



Tower Model CH3805NZ

## Pricing Structure

### Here's how it works...

Locate the desired Tempest Fireco Tower in this catalog. The package list price is shown under the "Standard Tower Features" data table on each product page. Keep the package as is, or select from the options list below and add those product option prices to the package price.

## 33-foot Tower, CH3805NZ (priced with 6 x 750W 120V Halogen)

### Specifications

Extended Height :	33' 9"	\$ 6,116
Retracted Height:	79"	
Max top load :	176 lbs.	
Base tube diameter :	5.98" (152mm)	
Number of sections :	Eight	
Max wind speed :	68 mph @ 742 sq. in.	

### Standard Tower Features

Part Number	Description	Price
TT.31621	Non-Dual Tilt and Turn 12V STANDARD	\$ 2,690
RC.31747	Wireless Remote Control	\$ 429
RC.31746	Wired Remote Control	\$ 1,377
KR-36-WB (6)	Havis Shields 6 x 750W 120V Halogen Lights	\$ 2,265
MS.32301.MI	Tower Extension Warning Switch	\$ 131
FB.33800	Lookup Light	\$ 310
CODE Z	Cable Z: (9)16ga + (13)24ga	\$ 302
BK.30207	Upper Mounting Bracket	\$ 148
BK.30107	Lower Mounting Bracket	\$ 79

**Package List Price: \$13,847**

### OPTIONAL 6 x 750W 120V Lighting

Part Number	Description	Add
OPA100-S75 (6)	Fire Research Optimum	\$ 223

### OPTIONAL Dual Tilt and Turn

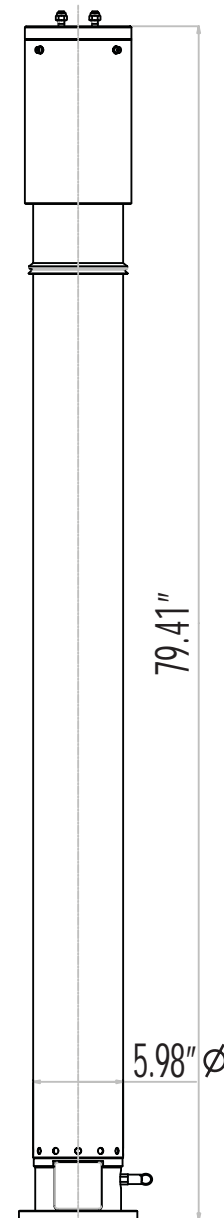
Part Number	Description	Add
TT.31641	DUAL Tilt/Turn 12V STANDARD	\$ 1,067
RC.31748	Wired Remote Control 3 motors	
RC.31749	Wireless Remote Control 3 motors	

### OPTIONAL Smart Remote Control

Part Number	Description	Add
RC.31756	SMART Remote Control (non-dual tilt)	\$ 100
RC.31758	SMART Remote Control (dual tilt)	\$ 150

### OPTIONAL Mounting Bracket

Part Number	Description	Add
BK.30057	Square Roof Bracket	\$ 50



Tower Model CH3805NZ

## *We're Here to Assist!*

### Customer Service Hours

Contact a Tempest Fireco Towers Customer Service Representative or Sales Team member for assistance with quotes and specifications. Customer Service is available Monday through Friday, 7am-5pm, PST.

# 2200 Series

## 33-foot Tower, CH3805NZ

(priced with 4 x 900W 240V)

### Specifications

Extended Height :	33' 9"	\$ 6,116
Retracted Height:	79"	
Max top load :	176 lbs.	
Base tube diameter :	5.98" (152mm)	
Number of sections :	Eight	
Max wind speed :	68 mph @ 742 sq. in.	

### Standard Tower Features

Part Number	Description	Price
TT.31621	Non-Dual Tilt and Turn 12V STANDARD	\$ 2,690
RC.31747	Wireless Remote Control	\$ 429
RC.31746	Wired Remote Control	\$ 1,377
KR-31-WB (4)	Havis Shields 4 x 900W 240V Lights	\$ 1,815
MS.32301.MI	Tower Extension Warning Switch	\$ 131
FB.33800	Lookup Light	\$ 310
CODE Z	Cable Z: (9)16ga + (13)24ga	\$ 302
BK.30207	Upper Mounting Bracket	\$ 148
BK.30107	Lower Mounting Bracket	\$ 79

**Package List Price: \$13,397**

### OPTIONAL 4 x 900W 240V Lighting

Part Number	Description	Add
OPA100-R90 (4)	Fire Research Optimum	\$ 254

### OPTIONAL Dual Tilt and Turn

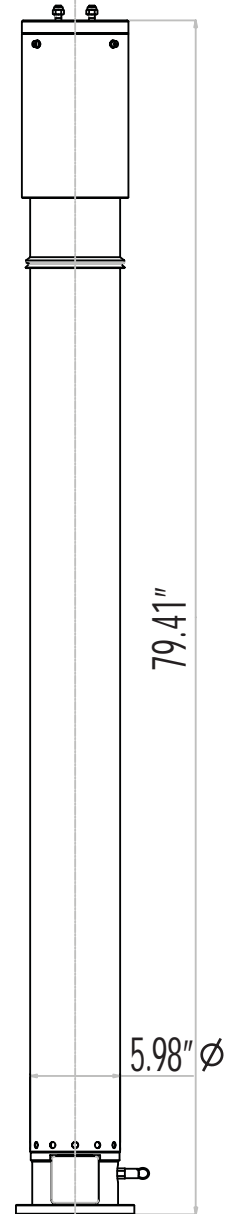
Part Number	Description	Add
TT.31641	DUAL Tilt/Turn 12V STANDARD	\$ 1,067
RC.31748	Wired Remote Control 3 motors	
RC.31749	Wireless Remote Control 3 motors	

### OPTIONAL Smart Remote Control

Part Number	Description	Add
RC.31756	SMART Remote Control (non-dual tilt)	\$ 100
RC.31758	SMART Remote Control (dual tilt)	\$ 150

### OPTIONAL Mounting Bracket

Part Number	Description	Add
BK.30057	Square Roof Bracket	\$ 50



Tower Model CH3805NZ

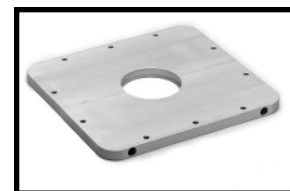
## Featured Mounting Brackets



Standard BK.30207



Standard BK.30107



Optional BK.30057

## 33-foot Tower, CH3805NZ

(priced with 6 x 900W 240V)

### Specifications

Extended Height :	33' 9"	\$ 6,116
Retracted Height:	79"	
Max top load :	176 lbs.	
Base tube diameter :	5.98" (152mm)	
Number of sections :	Eight	
Max wind speed :	68 mph @ 742 sq. in.	

### Standard Tower Features

Part Number	Description	Price
TT.31621	Non-Dual Tilt and Turn 12V STANDARD	\$ 2,690
RC.31747	Wireless Remote Control	\$ 429
RC.31746	Wired Remote Control	\$ 1,377
KR-31-WB (6)	Havis Shields 6 x 900W 240V Lights	\$ 2,639
MS.32301.MI	Tower Extension Warning Switch	\$ 131
FB.33800	Lookup Light	\$ 310
CODE Z	Cable Z: (9)16ga + (13)24ga	\$ 302
BK.30207	Upper Mounting Bracket	\$ 148
BK.30107	Lower Mounting Bracket	\$ 79

**Package List Price: \$14,221**

### OPTIONAL 6 x 900W 240V Lighting

Part Number	Description	Add
OPA100-R90 (6)	Fire Research Optimum	\$ 380

### OPTIONAL Dual Tilt and Turn

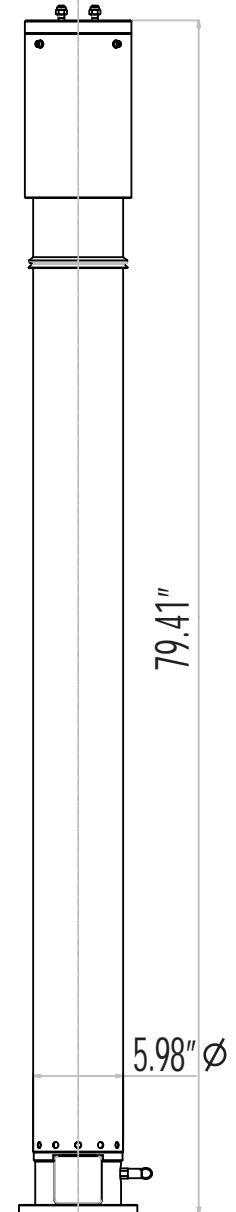
Part Number	Description	Add
TT.31641	DUAL Tilt/Turn 12V STANDARD	\$ 1,067
RC.31748	Wired Remote Control 3 motors	
RC.31749	Wireless Remote Control 3 motors	

### OPTIONAL Smart Remote Control

Part Number	Description	Add
RC.31756	SMART Remote Control (non-dual tilt)	\$ 100
RC.31758	SMART Remote Control (dual tilt)	\$ 150

### OPTIONAL Mounting Bracket

Part Number	Description	Add
BK.30057	Square Roof Bracket	\$ 50



Tower Model CH3805NZ

## Product Fact

### Low Maintenance

Tower requires no routine lubrication. All internal lubrication is performed during assembly.

# 2200 Series

## 33-foot Tower, CH3805NW (priced with 2 x 1000W 240V Metal Halide)

### Specifications

Extended Height :	33' 9"	\$ 6,116
Retracted Height:	79"	
Max top load :	176 lbs.	
Base tube diameter :	5.98" (152mm)	
Number of sections :	Eight	
Max wind speed :	68 mph @ 742 sq. in.	

#### Standard Tower Features

Part Number	Description	Price
TT.31621	Non-Dual Tilt and Turn 12V STANDARD	\$ 2,690
RC.31747	Wireless Remote Control	\$ 479
RC.31746	Wired Remote Control	\$ 1,536
MS.32301.MI	Tower Extension Warning Switch	\$ 131
FD.34321.T.ST	FIRECO 2 x 1000W 240V MH Lights	\$ 3,425
FB.33800	Lookup Light	\$ 310
CODE W	Cable W: 11x16awg + 8x20awg + 4x26awg + MICROCOAX 75 Ohm	\$ 332
BK.30207	Upper Mounting Bracket	\$ 148
BK.30107	Lower Mounting Bracket	\$ 79

**Package List Price: \$15,246**

#### OPTIONAL Dual Tilt and Turn

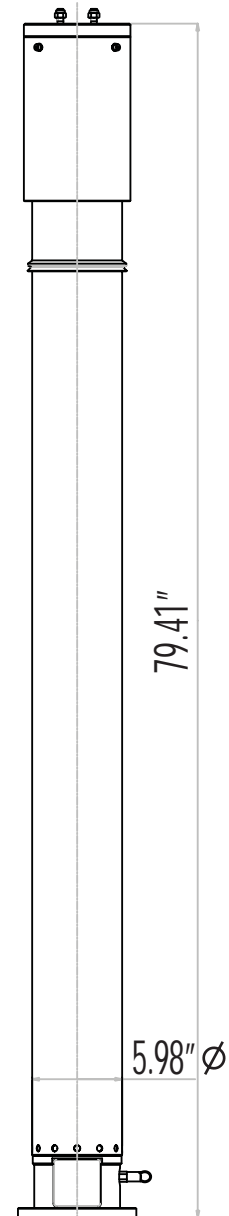
Part Number	Description	Add
TT.31641	DUAL Tilt/Turn 12V STANDARD	\$ 1,067
RC.31748	Wired Remote Control 3 motors	
RC.31749	Wireless Remote Control 3 motors	

#### OPTIONAL Smart Remote Control

Part Number	Description	Add
RC.31756	SMART Remote Control (non-dual tilt)	\$ 100
RC.31758	SMART Remote Control (dual tilt)	\$ 150

#### OPTIONAL Mounting Bracket

Part Number	Description	Add
BK.30057	Square Roof Bracket	\$ 50



Tower Model CH3805NW

## Pricing Structure

### Here's how it works...

Locate the desired Tempest Fireco Tower in this catalog. The package list price is shown under the "Standard Tower Features" data table on each product page. Keep the package as is, or select from the options list below and add those product option prices to the package price.

## 33-foot Tower, CH3805NW (priced with 4 x 1000W 240V Metal Halide)

### Specifications

Extended Height :	33' 9"	\$ 6,116
Retracted Height:	79"	
Max top load :	176 lbs.	
Base tube diameter :	5.98" (152mm)	
Number of sections :	Eight	
Max wind speed :	68 mph @ 742 sq. in.	

### Standard Tower Features

Part Number	Description	Price
TT.31625	DUAL Tilt and Turn 12V HEAVY	\$ 4,734
RC.31749	Wireless Remote Control 3 motors	\$ 479
RC.31748	Wired Remote Control 3 motors	\$ 1,536
MS.32301.MI	Tower Extension Warning Switch	\$ 131
FD.34334.T.ST	FIRECO 4 x 1000W 240V MH Lights	\$ 6,851
FB.33800	Lookup Light	\$ 310
CODE W	Cable W: 11x16awg + 8x20awg + 4x26awg + MICROCOAX 75 Ohm	\$ 332
BK.30207	Upper Mounting Bracket	\$ 148
BK.30107	Lower Mounting Bracket	\$ 79

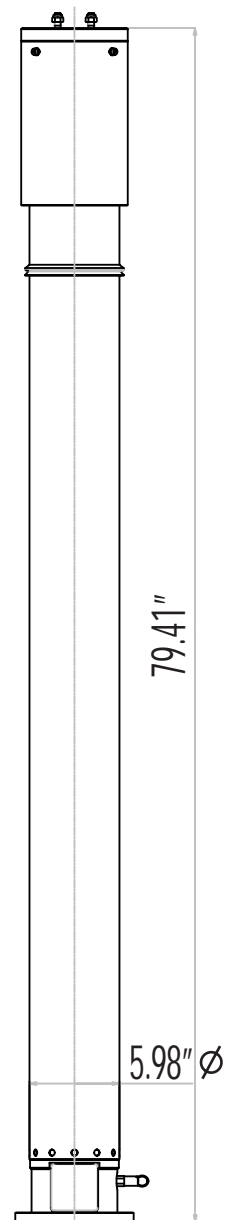
**Package List Price: \$20,716**

### OPTIONAL Smart Remote Control

Part Number	Description	Add
RC.31756	SMART Remote Control (non-dual tilt)	\$ 100
RC.31758	SMART Remote Control (dual tilt)	\$ 150

### OPTIONAL Mounting Bracket

Part Number	Description	Add
BK.30057	Square Roof Bracket	\$ 50



Tower Model CH3805NW

## Lights, Cameras, and Communications

### We're an OEM

Tempest Fireco Towers is an OEM for all major lighting manufacturers as well as many camera and communication manufacturers. Choose from popular brand names such as Havis-Shields, Fire Research Corporation, Tele-Lite, and Intec or R-Vision cameras, and also from our own Fireco brand of quality lighting products.

# 2200 Series

## 33-foot Tower, CH3805NZ (priced with 2 x 1500W 240V Halogen)

### Specifications

Extended Height :	33' 9"	\$ 6,116
Retracted Height:	79"	
Max top load :	176 lbs.	
Base tube diameter :	5.98" (152mm)	
Number of sections :	Eight	
Max wind speed :	68 mph @ 742 sq. in.	

### Standard Tower Features

Part Number	Description	Price
TT.31621	Non-Dual Tilt and Turn 12V STANDARD	\$ 2,690
RC.31747	Wireless Remote Control	\$ 429
RC.31746	Wired Remote Control	\$ 1,377
MS.32301.MI	Tower Extension Warning Switch	\$ 131
FD.34154.TO	FIRECO 2 x 1500W 240V Halogen Omega Lights	\$ 475
FB.33800	Lookup Light	\$ 310
CODE Z	Cable Z: (9)16ga + (13)24ga	\$ 302
BK.30207	Upper Mounting Bracket	\$ 148
BK.30107	Lower Mounting Bracket	\$ 79

**Package List Price: \$12,057**

### OPTIONAL 2 x 1500W 240V Lighting

Part Number	Description	Add
OPA100-M15 (2)	Fire Research Optimum	\$ 643

### OPTIONAL Dual Tilt and Turn

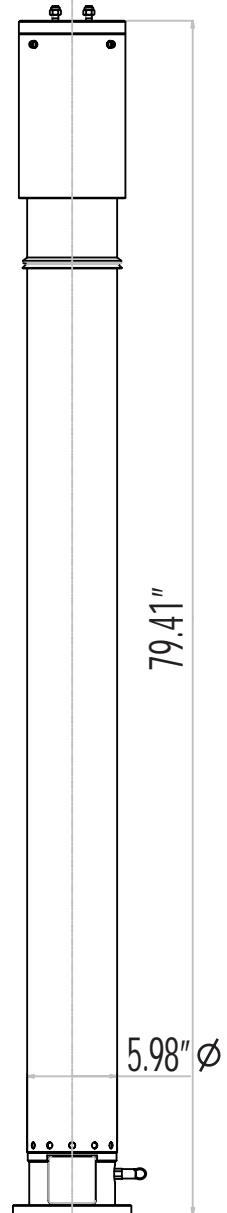
Part Number	Description	Add
TT.31641	DUAL Tilt/Turn 12V STANDARD	\$ 1,067
RC.31748	Wired Remote Control 3 motors	
RC.31749	Wireless Remote Control 3 motors	

### OPTIONAL Smart Remote Control

Part Number	Description	Add
RC.31756	SMART Remote Control (non-dual tilt)	\$ 100
RC.31758	SMART Remote Control (dual tilt)	\$ 150

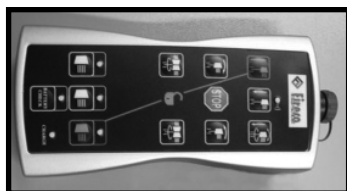
### OPTIONAL Mounting Bracket

Part Number	Description	Add
BK.30057	Square Roof Bracket	\$ 50

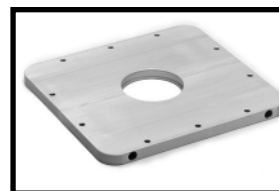


Tower Model CH3805NZ

## Featured Options



Smart Remote Non-Dual Tilt RC.31756



Square Roof Bracket BK.30057

## 33-foot Tower, CH3805NZ (priced with 4 x 1500W 240V Halogen)

### Specifications

Extended Height :	33' 9"	\$ 6,116
Retracted Height:	79"	
Max top load :	176 lbs.	
Base tube diameter :	5.98" (152mm)	
Number of sections :	Eight	
Max wind speed :	68 mph @ 742 sq. in.	

#### Standard Tower Features

Part Number	Description	Price
TT.31621	Non-Dual Tilt and Turn 12V STANDARD	\$ 2,690
RC.31747	Wireless Remote Control	\$ 429
RC.31746	Wired Remote Control	\$ 1,377
MS.32301.MI	Tower Extension Warning Switch	\$ 131
FD.34156.T	FIRECO 4 x 1500W 240V Halogen Lights	\$ 834
FB.33800	Lookup Light	\$ 310
CODE Z	Cable Z: (9)16ga + (13)24ga	\$ 302
BK.30207	Upper Mounting Bracket	\$ 148
BK.30107	Lower Mounting Bracket	\$ 79

**Package List Price: \$12,461**

#### OPTIONAL 4 x 1500W 240V Lighting

Part Number	Description	Add
OPA100-M15 (4)	Fire Research Optimum	\$ 1,235

#### OPTIONAL Dual Tilt and Turn

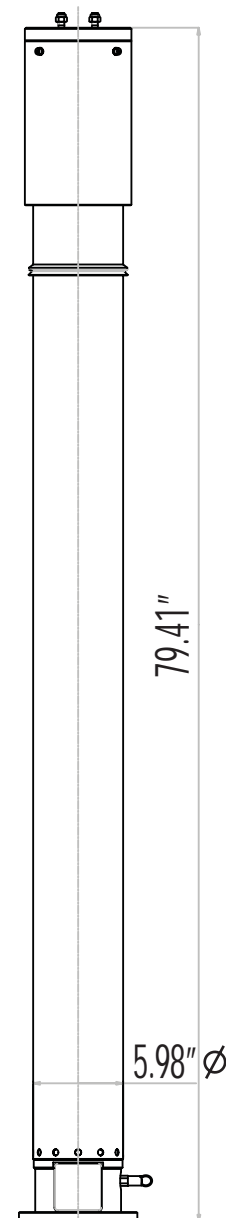
Part Number	Description	Add
TT.31641	DUAL Tilt/Turn 12V STANDARD	\$ 1,067
RC.31748	Wired Remote Control 3 motors	
RC.31749	Wireless Remote Control 3 motors	

#### OPTIONAL Smart Remote Control

Part Number	Description	Add
RC.31756	SMART Remote Control (non-dual tilt)	\$ 100
RC.31758	SMART Remote Control (dual tilt)	\$ 150

#### OPTIONAL Mounting Bracket

Part Number	Description	Add
BK.30057	Square Roof Bracket	\$ 50



Tower Model CH3805NZ

## Product Fact

### Extension Method

Pneumatic height extension may be achieved with a compressed air supply from chassis air brakes, breathing air system, hand pump or small electric air compressor.

# 2200 Series

## 33-foot Tower, CH3805NZ (priced with 6 x 1500W 240V Halogen)

### Specifications

Extended Height :	33' 9"	\$ 6,116
Retracted Height:	79"	
Max top load :	176 lbs.	
Base tube diameter :	5.98" (152mm)	
Number of sections :	Eight	
Max wind speed :	68 mph @ 742 sq. in.	

#### Standard Tower Features

Part Number	Description	Price
TT.31621	Non-Dual Tilt and Turn 12V STANDARD	\$ 2,690
RC.31747	Wireless Remote Control	\$ 429
RC.31746	Wired Remote Control	\$ 1,377
MS.32301.MI	Tower Extension Warning Switch	\$ 131
FD.34159.T	FIRECO 6 x 1500W 240V Halogen Lights	\$ 1,109
FB.33800	Lookup Light	\$ 310
CODE Z	Cable Z: (9)16ga + (13)24ga	\$ 302
BK.30207	Upper Mounting Bracket	\$ 148
BK.30107	Lower Mounting Bracket	\$ 79

**Package List Price: \$12,691**

#### OPTIONAL 6 x 1500W 240V Lighting

Part Number	Description	Add
OPA100-M15 (6)	Fire Research Optimum	\$ 1,910

#### OPTIONAL Dual Tilt and Turn

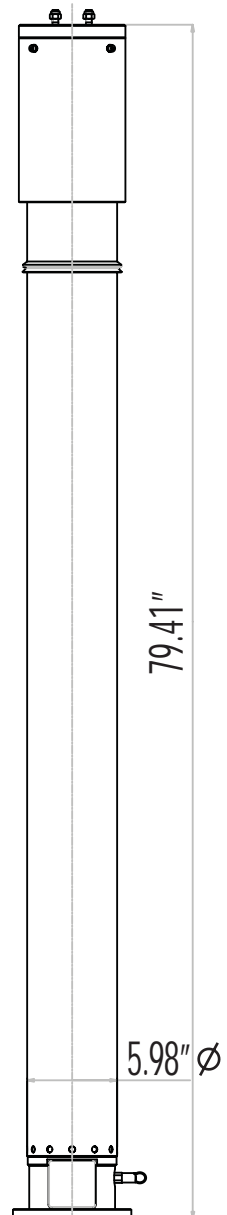
Part Number	Description	Add
TT.31641	DUAL Tilt/Turn 12V STANDARD	\$ 1,067
RC.31748	Wired Remote Control 3 motors	
RC.31749	Wireless Remote Control 3 motors	

#### OPTIONAL Smart Remote Control

Part Number	Description	Add
RC.31756	SMART Remote Control (non-dual tilt)	\$ 100
RC.31758	SMART Remote Control (dual tilt)	\$ 150

#### OPTIONAL Mounting Bracket

Part Number	Description	Add
BK.30057	Square Roof Bracket	\$ 50



Tower Model CH3805NZ

## Pricing Structure

### Here's how it works...

Locate the desired Tempest Fireco Tower in this catalog. The package list price is shown under the "Standard Tower Features" data table on each product page. Keep the package as is, or select from the options list below and add those product option prices to the package price.

