

2200 Series

26-foot Tower, CH3718NZ (priced with 4 x 750W 120V Halogen)

Specifications

Extended Height :	26' 5"	\$ 5,472
Retracted Height:	73"	
Max top load :	265 lbs.	
Base tube diameter :	5.98" (152mm)	
Number of sections :	Seven	
Max wind speed :	68 mph @ 742 sq. in.	

Standard Tower Features

Part Number	Description	Price
TT.31621	Non-Dual Tilt and Turn 12V STANDARD	\$ 2,690
RC.31747	Wireless Remote Control	\$ 429
RC.31746	Wired Remote Control	\$ 1,377
MS.32301.MI	Tower Extension Warning Switch	\$ 131
FD.34125/750.110.T	FIRECO 4 x 750W 120V Halogen Lights	\$ 874
FB.33800	Lookup Light	\$ 310
CODE Z	Cable Z: (9)16ga + (13)24ga	\$ 302
BK.30207	Upper Mounting Bracket	\$ 148
BK.30107	Lower Mounting Bracket	\$ 79

Package List Price: \$11,812

OPTIONAL 4 x 750W 120V Lighting

Part Number	Description	Add
OPA100-S75 (4)	Fire Research Optimum	\$ 841
KR-36-WB (4)	Havis Shields Magnafire	\$ 692

OPTIONAL Dual Tilt and Turn

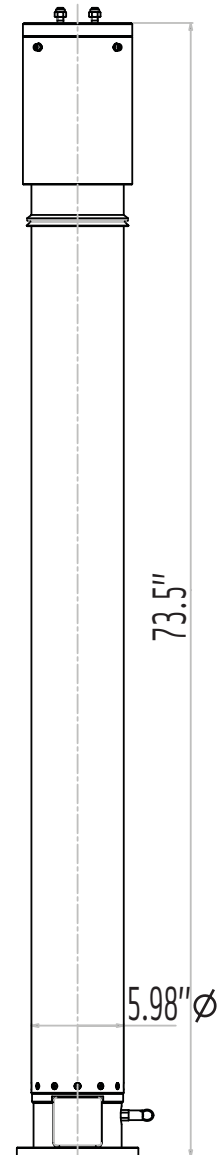
Part Number	Description	Add
TT.31641	DUAL Tilt/Turn 12V STANDARD	\$ 1,067
RC.31748	Wired Remote Control 3 motors	
RC.31749	Wireless Remote Control 3 motors	

OPTIONAL Smart Remote Control

Part Number	Description	Add
RC.31756	SMART Remote Control (non-dual tilt)	\$ 100
RC.31758	SMART Remote Control (dual tilt)	\$ 150

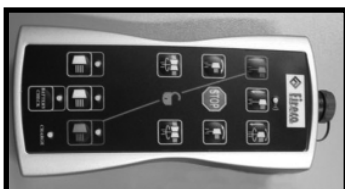
OPTIONAL Mounting Bracket

Part Number	Description	Add
BK.30057	Square Roof Bracket	\$ 50



Tower Model CH3718NZ

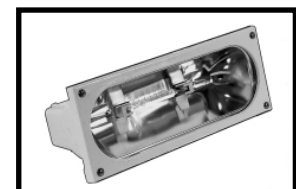
Featured Options



Smart Remote Non-Dual Tilt RC.31756



Fire Research Optimum OPA100-S75 (4)



Havis Shields Magnafire KR-36-WB (4)

26-foot Tower, CH3718NZ (priced with 6 x 750W 120V Halogen)

Specifications

Extended Height :	26' 5"	\$ 5,472
Retracted Height:	73"	
Max top load :	265 lbs.	
Base tube diameter :	5.98" (152mm)	
Number of sections :	Seven	
Max wind speed :	68 mph @ 742 sq. in.	

Standard Tower Features

Part Number	Description	Price
TT.31621	Non-Dual Tilt and Turn 12V STANDARD	\$ 2,690
RC.31747	Wireless Remote Control	\$ 429
RC.31746	Wired Remote Control	\$ 1,377
KR-36-WB (6)	Havis Shields 6 x 750W 120V Halogen Lights	\$ 2,265
MS.32301.MI	Tower Extension Warning Switch	\$ 131
FB.33800	Lookup Light	\$ 310
CODE Z	Cable Z: (9)16ga + (13)24ga	\$ 302
BK.30207	Upper Mounting Bracket	\$ 148
BK.30107	Lower Mounting Bracket	\$ 79

Package List Price: \$13,203

OPTIONAL 6 x 750W 120V Lighting

Part Number	Description	Add
OPA100-S75 (6)	Fire Research Optimum	\$ 223

OPTIONAL Dual Tilt and Turn

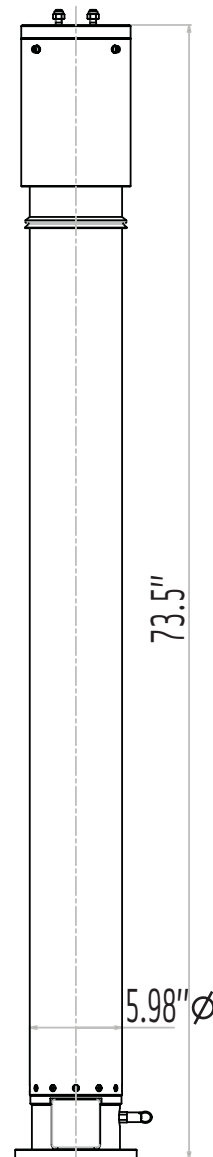
Part Number	Description	Add
TT.31641	DUAL Tilt/Turn 12V STANDARD	\$ 1,067
RC.31748	Wired Remote Control 3 motors	
RC.31749	Wireless Remote Control 3 motors	

OPTIONAL Smart Remote Control

Part Number	Description	Add
RC.31756	SMART Remote Control (non-dual tilt)	\$ 100
RC.31758	SMART Remote Control (dual tilt)	\$ 150

OPTIONAL Mounting Bracket

Part Number	Description	Add
BK.30057	Square Roof Bracket	\$ 50



Tower Model CH3718NZ

Product Fact

Air Safety Valve

Each Tempest Fireco Tower is equipped with an Air Safety Relief Valve to drain condensation and release over-pressure.

2200 Series

26-foot Tower, CH3718NZ

(priced with 4 x 900W 240V)

Specifications

Extended Height :	26' 5"	\$ 5,472
Retracted Height:	73"	
Max top load :	265 lbs.	
Base tube diameter :	5.98" (152mm)	
Number of sections :	Seven	
Max wind speed :	68 mph @ 742 sq. in.	

Standard Tower Features

Part Number	Description	Price
TT.31621	Non-Dual Tilt and Turn 12V STANDARD	\$ 2,690
RC.31747	Wireless Remote Control	\$ 429
RC.31746	Wired Remote Control	\$ 1,377
KR-31-WB (4)	Havis Shields 4 x 900W 240V Lights	\$ 1,815
MS.32301.MI	Tower Extension Warning Switch	\$ 131
FB.33800	Lookup Light	\$ 310
CODE Z	Cable Z: (9)16ga + (13)24ga	\$ 302
BK.30207	Upper Mounting Bracket	\$ 148
BK.30107	Lower Mounting Bracket	\$ 79

Package List Price: \$12,753

OPTIONAL 4 x 900W 240V Lighting

Part Number	Description	Add
OPA100-R90 (4)	Fire Research Optimum	\$ 254

OPTIONAL Dual Tilt and Turn

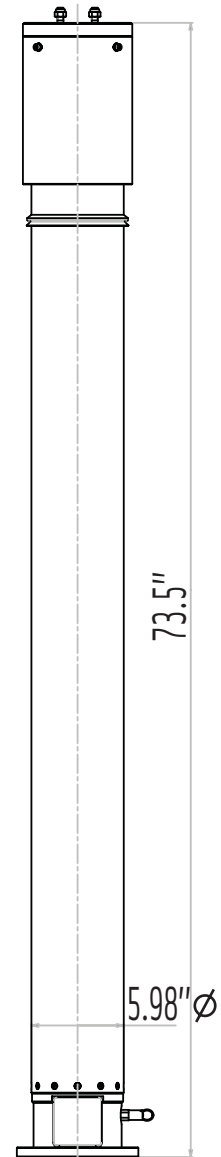
Part Number	Description	Add
TT.31641	DUAL Tilt/Turn 12V STANDARD	\$ 1,067
RC.31748	Wired Remote Control 3 motors	
RC.31749	Wireless Remote Control 3 motors	

OPTIONAL Smart Remote Control

Part Number	Description	Add
RC.31756	SMART Remote Control (non-dual tilt)	\$ 100
RC.31758	SMART Remote Control (dual tilt)	\$ 150

OPTIONAL Mounting Bracket

Part Number	Description	Add
BK.30057	Square Roof Bracket	\$ 50



Tower Model CH3718NZ

Pricing Structure

Here's how it works...

Locate the desired Tempest Fireco Tower in this catalog. The package list price is shown under the "Standard Tower Features" data table on each product page. Keep the package as is, or select from the options list below and add those product option prices to the package price.

26-foot Tower, CH3718NZ (priced with 6 x 900W 240V Halogen)

Specifications

Extended Height :	26' 5"	\$ 5,472
Retracted Height:	73"	
Max top load :	265 lbs.	
Base tube diameter :	5.98" (152mm)	
Number of sections :	Seven	
Max wind speed :	68 mph @ 742 sq. in.	

Standard Tower Features

Part Number	Description	Price
TT.31621	Non-Dual Tilt and Turn 12V STANDARD	\$ 2,690
RC.31747	Wireless Remote Control	\$ 429
RC.31746	Wired Remote Control	\$ 1,377
KR-31-WB (6)	Havis Shields 6 x 900W 240V Lights	\$ 2,639
MS.32301.MI	Tower Extension Warning Switch	\$ 131
FB.33800	Lookup Light	\$ 310
CODE Z	Cable Z: (9)16ga + (13)24ga	\$ 302
BK.30207	Upper Mounting Bracket	\$ 148
BK.30107	Lower Mounting Bracket	\$ 79

Package List Price: \$13,577

OPTIONAL 6 x 900W 240V Lighting

Part Number	Description	Add
OPA100-R90 (6)	Fire Research Optimum	\$ 380

OPTIONAL Dual Tilt and Turn

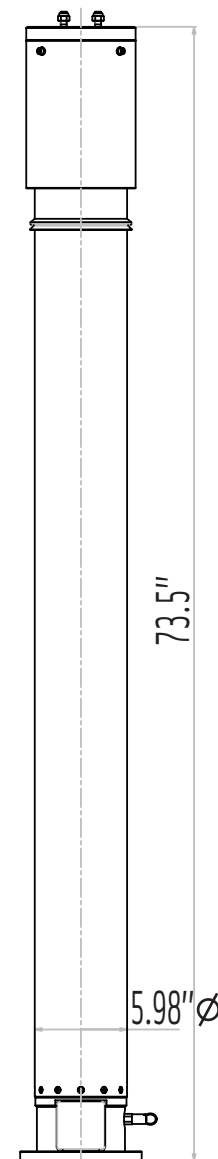
Part Number	Description	Add
TT.31641	DUAL Tilt/Turn 12V STANDARD	\$ 1,067
RC.31748	Wired Remote Control 3 motors	
RC.31749	Wireless Remote Control 3 motors	

OPTIONAL Smart Remote Control

Part Number	Description	Add
RC.31756	SMART Remote Control (non-dual tilt)	\$ 100
RC.31758	SMART Remote Control (dual tilt)	\$ 150

OPTIONAL Mounting Bracket

Part Number	Description	Add
BK.30057	Square Roof Bracket	\$ 50



Tower Model CH3718NZ

We're Here to Assist!

Customer Service Hours

Contact a Tempest Fireco Towers Customer Service Representative or Sales Team member for assistance with quotes and specifications. Customer Service is available Monday through Friday, 7am-5pm, PST.

2200 Series

26-foot Tower, CH3718NW

(priced with 2 x 1000W 240V Metal Halide)

Specifications

Extended Height :	26' 5"	\$ 5,472
Retracted Height:	73"	
Max top load :	265 lbs.	
Base tube diameter :	5.98" (152mm)	
Number of sections :	Seven	
Max wind speed :	68 mph @ 742 sq. in.	

Standard Tower Features

Part Number	Description	Price
TT.31621	Non-Dual Tilt and Turn 12V STANDARD	\$ 2,690
RC.31747	Wireless Remote Control	\$ 429
RC.31746	Wired Remote Control	\$ 1,377
MS.32301.MI	Tower Extension Warning Switch	\$ 131
FD.34321.T.ST	FIRECO 2 x 1000W 240V MH Lights	\$ 3,425
FB.33800	Lookup Light	\$ 310
CODE W	Cable W: 11x16awg + 8x20awg + 4x26awg + MICROCOAX 75 Ohm	\$ 332
BK.30207	Upper Mounting Bracket	\$ 148
BK.30107	Lower Mounting Bracket	\$ 79

Package List Price: \$14,393

OPTIONAL Dual Tilt and Turn

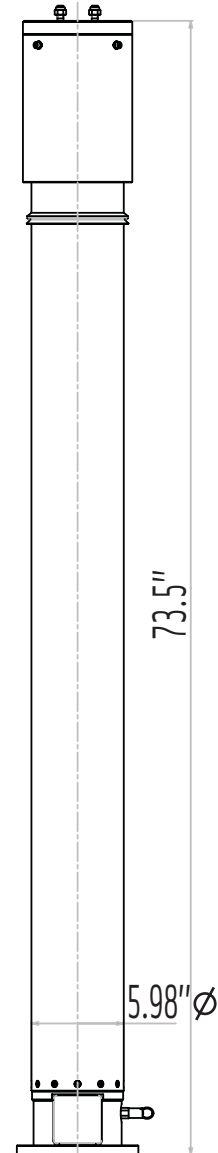
Part Number	Description	Add
TT.31641	DUAL Tilt/Turn 12V STANDARD	\$ 1,067
RC.31748	Wired Remote Control 3 motors	
RC.31749	Wireless Remote Control 3 motors	

OPTIONAL Smart Remote Control

Part Number	Description	Add
RC.31756	SMART Remote Control (non-dual tilt)	\$ 100
RC.31758	SMART Remote Control (dual tilt)	\$ 150

OPTIONAL Mounting Bracket

Part Number	Description	Add
BK.30057	Square Roof Bracket	\$ 50



Tower Model CH3718NW

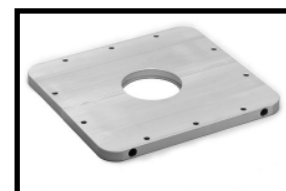
Featured Mounting Brackets



Standard BK.30207



Standard BK.30107



Optional BK.30057

26-foot Tower, CH3718NW (priced with 4 x 1000W 240V Metal Halide)

Specifications

Extended Height :	26' 5"	\$ 5,472
Retracted Height:	73"	
Max top load :	265 lbs.	
Base tube diameter :	5.98" (152mm)	
Number of sections :	Seven	
Max wind speed :	68 mph @ 742 sq. in.	

Standard Tower Features

Part Number	Description	Price
TT.31625	DUAL Tilt and Turn 12V HEAVY	\$ 2,690
RC.31749	Wireless Remote Control 3 motors	\$ 429
RC.31748	Wired Remote Control 3 motors	\$ 1,377
MS.32301.MI	Tower Extension Warning Switch	\$ 131
FD.34334.T.ST	FIRECO 4 x 1000W 240V MH Lights	\$ 6,851
FB.33800	Lookup Light	\$ 310
CODE W	Cable W: 11x16awg + 8x20awg + 4x26awg + MICROCOAX 75 Ohm	\$ 332
BK.30207	Upper Mounting Bracket	\$ 148
BK.30107	Lower Mounting Bracket	\$ 79

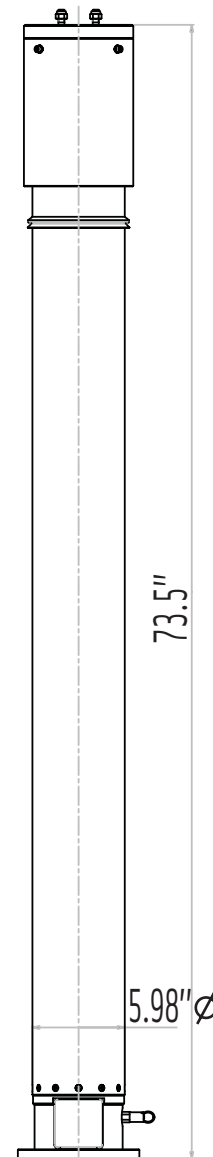
Package List Price: \$17,819

OPTIONAL Smart Remote Control

Part Number	Description	Add
RC.31756	SMART Remote Control (non-dual tilt)	\$ 100
RC.31758	SMART Remote Control (dual tilt)	\$ 150

OPTIONAL Mounting Bracket

Part Number	Description	Add
BK.30057	Square Roof Bracket	\$ 50



Tower Model CH3718NW

Product Fact

Mounting Heads

A standard feature of Tempest Fireco Towers are pre-drilled upper head assembly brackets (top heads) for mounting lights, tilt/turn units, cameras and other equipment.

2200 Series

26-foot Tower, CH3718NZ (priced with 2 x 1500W 240V Halogen)

Specifications

Extended Height :	26' 5"	\$ 5,472
Retracted Height:	73"	
Max top load :	265 lbs.	
Base tube diameter :	5.98" (152mm)	
Number of sections :	Seven	
Max wind speed :	68 mph @ 742 sq. in.	

Standard Tower Features

Part Number	Description	Price
TT.31621	Non-Dual Tilt and Turn 12V STANDARD	\$ 2,690
RC.31747	Wireless Remote Control	\$ 429
RC.31746	Wired Remote Control	\$ 1,377
MS.32301.MI	Tower Extension Warning Switch	\$ 131
FD.34154.TO	FIRECO 2 x 1500W 240V Halogen Omega Lights	\$ 475
FB.33800	Lookup Light	\$ 310
CODE Z	Cable Z: (9)16ga + (13)24ga	\$ 302
BK.30207	Upper Mounting Bracket	\$ 148
BK.30107	Lower Mounting Bracket	\$ 79

Package List Price: \$11,413

OPTIONAL 2 x 1500W 240V Lighting

Part Number	Description	Add
OPA100-M15 (2)	Fire Research Optimum	\$ 643

OPTIONAL Dual Tilt and Turn

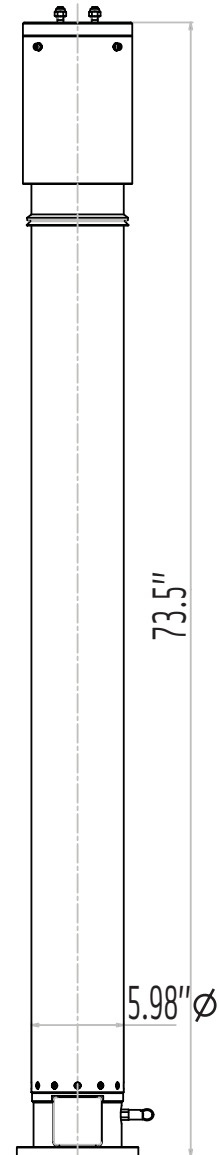
Part Number	Description	Add
TT.31641	DUAL Tilt/Turn 12V STANDARD	\$ 1,067
RC.31748	Wired Remote Control 3 motors	
RC.31749	Wireless Remote Control 3 motors	

OPTIONAL Smart Remote Control

Part Number	Description	Add
RC.31756	SMART Remote Control (non-dual tilt)	\$ 100
RC.31758	SMART Remote Control (dual tilt)	\$ 150

OPTIONAL Mounting Bracket

Part Number	Description	Add
BK.30057	Square Roof Bracket	\$ 50



Tower Model CH3718NZ

Lights, Cameras, and Communications

We're an OEM

Tempest Fireco Towers is an OEM for all major lighting manufacturers as well as many camera and communication manufacturers. Choose from popular brand names such as Havis-Shields, Fire Research Corporation, Tele-Lite, and Intec or R-Vision cameras, and also from our own Fireco brand of quality lighting products.

26-foot Tower, CH3718NZ (priced with 4 x 1500W 240V Halogen)

Specifications

Extended Height :	26' 5"	\$ 5,472
Retracted Height:	73"	
Max top load :	265 lbs.	
Base tube diameter :	5.98" (152mm)	
Number of sections :	Seven	
Max wind speed :	68 mph @ 742 sq. in.	

Standard Tower Features

Part Number	Description	Price
TT.31621	Non-Dual Tilt and Turn 12V STANDARD	\$ 2,690
RC.31747	Wireless Remote Control	\$ 429
RC.31746	Wired Remote Control	\$ 1,377
MS.32301.MI	Tower Extension Warning Switch	\$ 131
FD.34156.T	FIRECO 4 x 1500W 240V Halogen Lights	\$ 834
FB.33800	Lookup Light	\$ 310
CODE Z	Cable Z: (9)16ga + (13)24ga	\$ 302
BK.30207	Upper Mounting Bracket	\$ 148
BK.30107	Lower Mounting Bracket	\$ 79

Package List Price: \$11,772

OPTIONAL 4 x 1500W 240V Lighting

Part Number	Description	Add
OPA100-M15 (4)	Fire Research Optimum	\$ 1,235

OPTIONAL Dual Tilt and Turn

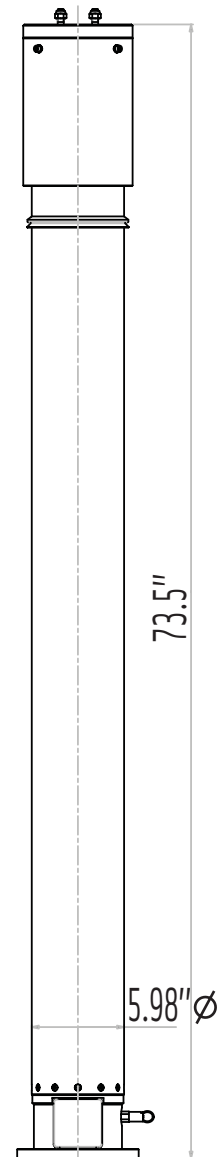
Part Number	Description	Add
TT.31641	DUAL Tilt/Turn 12V STANDARD	\$ 1,067
RC.31748	Wired Remote Control 3 motors	
RC.31749	Wireless Remote Control 3 motors	

OPTIONAL Smart Remote Control

Part Number	Description	Add
RC.31756	SMART Remote Control (non-dual tilt)	\$ 100
RC.31758	SMART Remote Control (dual tilt)	\$ 150

OPTIONAL Mounting Bracket

Part Number	Description	Add
BK.30057	Square Roof Bracket	\$ 50



Tower Model CH3718NZ

We're Here to Assist!

Customer Service Hours

Contact a Tempest Fireco Towers Customer Service Representative or Sales Team member for assistance with quotes and specifications. Customer Service is available Monday through Friday, 7am-5pm, PST.

2200 Series

26-foot Tower, CH3718NZ (priced with 6 x 1500W 240V Halogen)

Specifications

Extended Height :	26' 5"	\$ 5,472
Retracted Height:	73"	
Max top load :	265 lbs.	
Base tube diameter :	5.98" (152mm)	
Number of sections :	Seven	
Max wind speed :	68 mph @ 742 sq. in.	

Standard Tower Features

Part Number	Description	Price
TT.31621	Non-Dual Tilt and Turn 12V STANDARD	\$ 2,690
RC.31747	Wireless Remote Control	\$ 429
RC.31746	Wired Remote Control	\$ 1,377
MS.32301.MI	Tower Extension Warning Switch	\$ 131
FD.34159.T	FIRECO 6 x 1500W 240V Halogen Lights	\$ 1,109
FB.33800	Lookup Light	\$ 310
CODE Z	Cable Z: (9)16ga + (13)24ga	\$ 302
BK.30207	Upper Mounting Bracket	\$ 148
BK.30107	Lower Mounting Bracket	\$ 79

Package List Price: \$12,047

OPTIONAL 6 x 1500W 240V Lighting

Part Number	Description	Add
OPA100-M15 (6)	Fire Research Optimum	\$ 1,910

OPTIONAL Dual Tilt and Turn

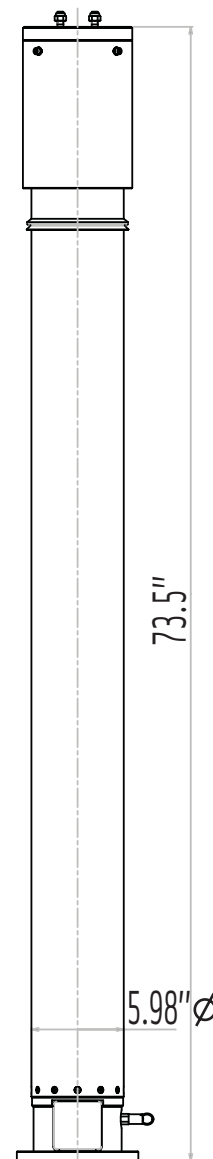
Part Number	Description	Add
TT.31641	DUAL Tilt/Turn 12V STANDARD	\$ 1,067
RC.31748	Wired Remote Control 3 motors	
RC.31749	Wireless Remote Control 3 motors	

OPTIONAL Smart Remote Control

Part Number	Description	Add
RC.31756	SMART Remote Control (non-dual tilt)	\$ 100
RC.31758	SMART Remote Control (dual tilt)	\$ 150

OPTIONAL Mounting Bracket

Part Number	Description	Add
BK.30057	Square Roof Bracket	\$ 50

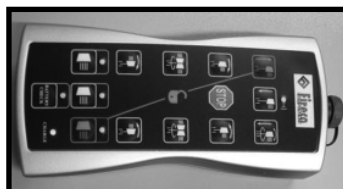


Tower Model CH3718NZ

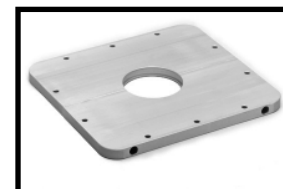
Featured Options



Fire Research Optimum OPA100-M15 (6)



Smart Remote Dual Tilt RC.31758



Square Roof Bracket BK.30057

26-foot Steady Tower CH6718N and CH6718T

Specifications

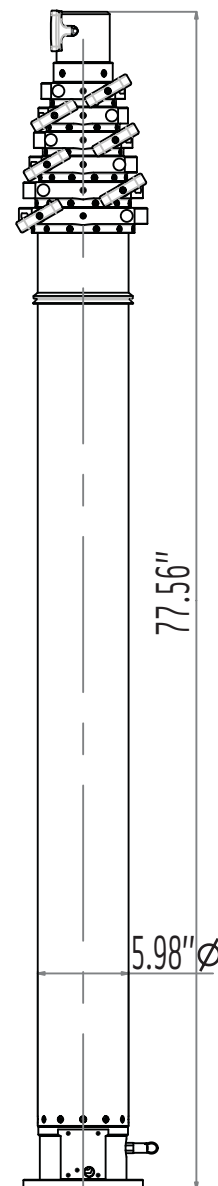
	CH6718N	CH6718T
	Non-Rotating	Manual Rotation
Extended Height :	26.5'	26.7'
Retracted Height:	77.6"	79"
Max top load :	265 lbs.	265 lbs.
Base tube diameter :	5.98" (152mm)	5.98" (152mm)
Number of sections :	Seven	Seven
Max wind speed :	68 mph / 775 in ²	68 mph / 775 in ²

Non-Rotating Tower		
Part Number	Description	Price
CH6718NA	Fixed (Non-Rotating)	\$ 6,715
GC.30904	Set of 3 guy collars - fixed on dia 77mm 3"	\$ 67

Manual Rotation Tower		
Part Number	Description	Price
CH6718TA	Manual Rotating Base	\$ 7,005
GC.30804	Set of 3 rings on turnable guy collars on dia 77mm 3"	\$ 201

Tower Options		
Part Number	Description	Price
RP.30603.T (3)	Guy rope - 49 ft (15 m)	\$ 342
PK.30701 (3)	Standard Picket	\$ 204
HA.31301	5 lb. Hammer	\$ 21
TP.35500	Bags for carrying ropes and pickets	\$ 126
FB.33800	Lookup Light	\$ 310
BK.30107	Lower Mounting Bracket	\$ 79
BK.30057	Square Roof Bracket	\$ 229
BK.30207	Upper Mounting Bracket	\$ 148
MS.32302	Reversed micro-switch	\$ 131

Internal Cable Options	
See Page 58	Cable must be less than 2.6" Diameter



Tower Model CH6718N

Product Fact

Internal Cables

Many towers are available with internal cables. Towers with internal cables feature standard power junction boxes at both the top and base of the tower.