

33-foot Steady Tower CH6805N and CH6805T

Specifications

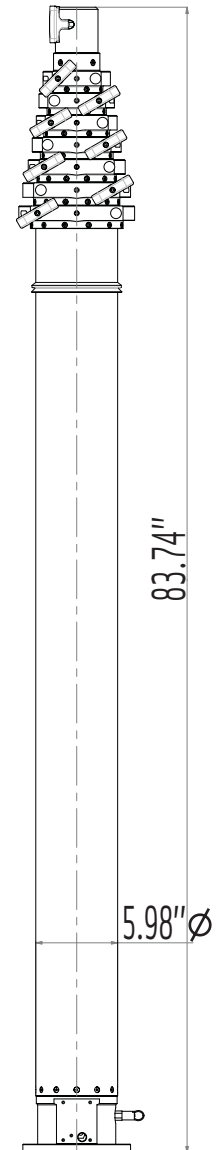
	CH6805N	CH6805T
	Non-Rotating	Manual Rotation
Extended Height :	34.1'	34.2'
Retracted Height:	83.8"	85.2"
Max top load :	176 lbs.	176 lbs.
Base tube diameter :	5.98" (152mm)	5.98" (152mm)
Number of sections :	Eight	Eight
Max wind speed :	62 mph / 775 in ²	62 mph / 775 in ²

Non-Rotating Tower		
Part Number	Description	Price
CH6805NA	Fixed (Non-Rotating)	\$ 7,536
GC.30903	Set of 3 guy collars - fixed on dia 64mm 2.52"	\$ 67

Manual Rotation Tower		
Part Number	Description	Price
CH6805TA	Manual Rotating Base	\$ 7,826
GC.30803	Set of 3 rings on turnable guy collars on dia 64mm 2.52"	\$ 185

Tower Options		
Part Number	Description	Price
RP.30603.T (3)	Guy rope - 49 ft (15 m)	\$ 342
PK.30701 (3)	Standard Picket	\$ 204
HA.31301	5 lb. Hammer	\$ 21
TP.35500	Bags for carrying ropes and pickets	\$ 126
FB.33800	Lookup Light	\$ 310
BK.30107	Lower Mounting Bracket	\$ 79
BK.30057	Square Roof Bracket	\$ 229
BK.30207	Upper Mounting Bracket	\$ 148
MS.32302	Reversed micro-switch	\$ 131

Internal Cable Options	
See Page 58	Cable must be less than 2.2" Diameter



Tower Model CH6805N

We're Here to Assist!

Customer Service Hours

Contact a Tempest Fireco Towers Customer Service Representative or Sales Team member for assistance with quotes and specifications. Customer Service is available Monday through Friday, 7am-5pm, PST.