

## 26-foot Steady Tower CH6718N and CH6718T

### Specifications

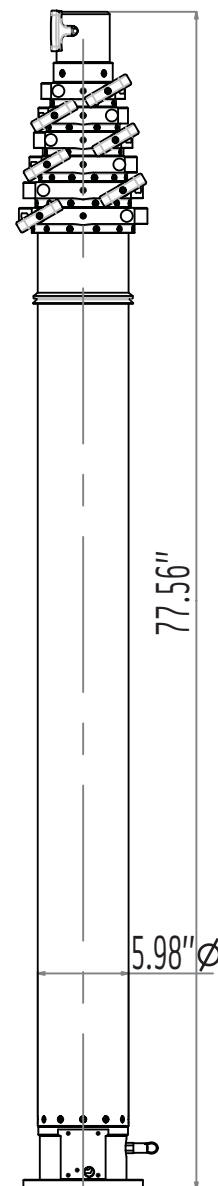
	CH6718N	CH6718T
	Non-Rotating	Manual Rotation
Extended Height :	26.5'	26.7'
Retracted Height:	77.6"	79"
Max top load :	265 lbs.	265 lbs.
Base tube diameter :	5.98" (152mm)	5.98" (152mm)
Number of sections :	Seven	Seven
Max wind speed :	68 mph / 775 in <sup>2</sup>	68 mph / 775 in <sup>2</sup>

Non-Rotating Tower		
Part Number	Description	Price
CH6718NA	Fixed (Non-Rotating)	\$ 6,715
GC.30904	Set of 3 guy collars - fixed on dia 77mm 3"	\$ 67

Manual Rotation Tower		
Part Number	Description	Price
CH6718TA	Manual Rotating Base	\$ 7,005
GC.30804	Set of 3 rings on turnable guy collars on dia 77mm 3"	\$ 201

Tower Options		
Part Number	Description	Price
RP.30603.T (3)	Guy rope - 49 ft (15 m)	\$ 342
PK.30701 (3)	Standard Picket	\$ 204
HA.31301	5 lb. Hammer	\$ 21
TP.35500	Bags for carrying ropes and pickets	\$ 126
FB.33800	Lookup Light	\$ 310
BK.30107	Lower Mounting Bracket	\$ 79
BK.30057	Square Roof Bracket	\$ 229
BK.30207	Upper Mounting Bracket	\$ 148
MS.32302	Reversed micro-switch	\$ 131

Internal Cable Options	
See Page 58	Cable must be less than 2.6" Diameter



Tower Model CH6718N

## Product Fact

### Internal Cables

Many towers are available with internal cables. Towers with internal cables feature standard power junction boxes at both the top and base of the tower.