

# 2200 Series

## 26-foot Tower, CH3718NZ (priced with 6 x 1500W 240V Halogen)

### Specifications

Extended Height :	26' 5"	\$ 5,472
Retracted Height:	73"	
Max top load :	265 lbs.	
Base tube diameter :	5.98" (152mm)	
Number of sections :	Seven	
Max wind speed :	68 mph @ 742 sq. in.	

#### Standard Tower Features

Part Number	Description	Price
TT.31621	Non-Dual Tilt and Turn 12V STANDARD	\$ 2,690
RC.31747	Wireless Remote Control	\$ 429
RC.31746	Wired Remote Control	\$ 1,377
MS.32301.MI	Tower Extension Warning Switch	\$ 131
FD.34159.T	FIRECO 6 x 1500W 240V Halogen Lights	\$ 1,109
FB.33800	Lookup Light	\$ 310
CODE Z	Cable Z: (9)16ga + (13)24ga	\$ 302
BK.30207	Upper Mounting Bracket	\$ 148
BK.30107	Lower Mounting Bracket	\$ 79

**Package List Price: \$12,047**

#### OPTIONAL 6 x 1500W 240V Lighting

Part Number	Description	Add
OPA100-M15 (6)	Fire Research Optimum	\$ 1,910

#### OPTIONAL Dual Tilt and Turn

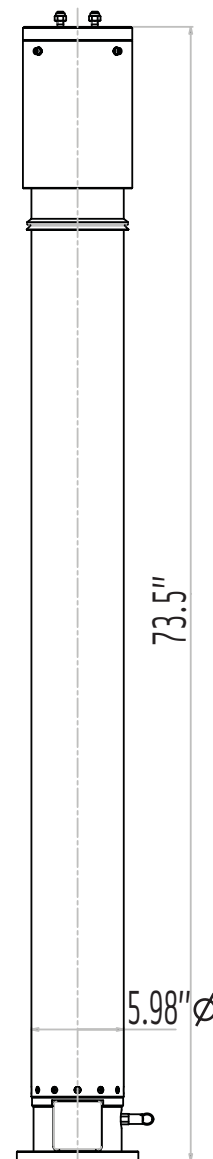
Part Number	Description	Add
TT.31641	DUAL Tilt/Turn 12V STANDARD	\$ 1,067
RC.31748	Wired Remote Control 3 motors	
RC.31749	Wireless Remote Control 3 motors	

#### OPTIONAL Smart Remote Control

Part Number	Description	Add
RC.31756	SMART Remote Control (non-dual tilt)	\$ 100
RC.31758	SMART Remote Control (dual tilt)	\$ 150

#### OPTIONAL Mounting Bracket

Part Number	Description	Add
BK.30057	Square Roof Bracket	\$ 50

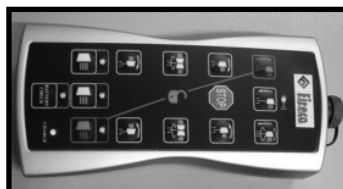


**Tower Model CH3718NZ**

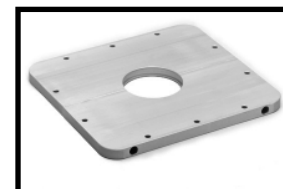
## Featured Options



Fire Research Optimum OPA100-M15 (6)



Smart Remote Dual Tilt RC.31758



Square Roof Bracket BK.30057