

## 19-foot Steady Tower CS6520N and CS6520T

### Specifications

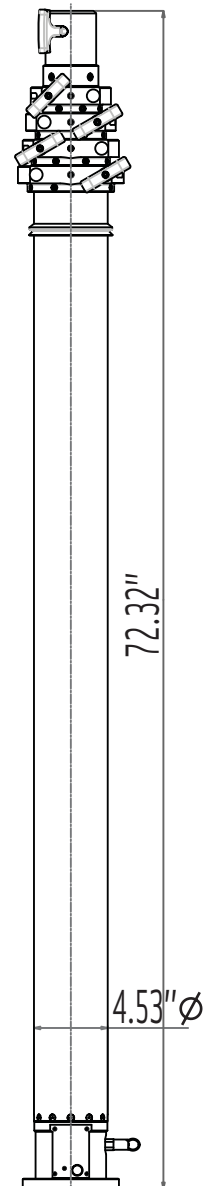
	CS6520N	CS6520T
	Non-Rotating	Manual Rotation
Extended Height :	19.9'	20'
Retracted Height:	72.3"	73.7"
Max top load :	110 lbs.	110 lbs.
Base tube diameter :	4.53" (115mm)	4.53" (115mm)
Number of sections :	Five	Five
Max wind speed :	75 mph / 740 in <sup>2</sup>	75 mph / 740 in <sup>2</sup>

Non-Rotating Tower		
Part Number	Description	Price
CS6520NA	Fixed (Non-Rotating)	\$ 4,862
GC.30903	Set of 3 guy collars - fixed on dia 64mm 2.52"	\$ 67

Manual Rotation Tower		
Part Number	Description	Price
CS6520TA	Manual Rotating Base	\$ 5,128
GC.30803	Set of 3 rings on turnable guy collars on dia 64mm 2.52"	\$ 185

Tower Options		
Part Number	Description	Price
RP.30602.T (3)	Guy ropes - 32 ft (10 m)	\$ 315
PK.30701 (3)	Standard Pickets	\$ 204
HA.31301	5 lb. Hammer	\$ 21
TP.35500	Bag for carrying ropes and pickets	\$ 126
FB.33800	Lookup Light	\$ 310
BK.30106	Lower Mounting Bracket	\$ 70
BK.30056	Square Roof Bracket	\$ 199
BK.30206	Upper Mounting Bracket	\$ 131
MS.32302	Reversed micro-switch	\$ 131

Internal Cable Options	
See Page 58	Cable must be less than 2.2" Diameter



Tower Model CS6520N

## Lights, Cameras, and Communications

### We're an OEM

Tempest Fireco Towers is an OEM for all major lighting manufacturers as well as many camera and communication manufacturers. Choose from popular brand names such as Havis-Shields, Fire Research Corporation, Tele-Lite, and Intec or R-Vision cameras, and also from our own Fireco brand of quality lighting products.