

2100 Series

19-foot Tower, CS3520NZ (priced with 2 x 1500W 240V Halogen)

Specifications

| | | |
|----------------------|----------------------|----------|
| Extended Height : | 19' 7" | \$ 4,063 |
| Retracted Height: | 68" | |
| Max top load : | 99 lbs. | |
| Base tube diameter : | 4.53" (115mm) | |
| Number of sections : | Five | |
| Max wind speed : | 74 mph @ 740 sq. in. | |

Standard Tower Features

| Part Number | Description | Price |
|-------------|--|----------|
| TT.31621 | Non-Dual Tilt and Turn 12V STANDARD | \$ 2,690 |
| RC.31747 | Wireless Remote Control | \$ 429 |
| RC.31746 | Wired Remote Control | \$ 1,377 |
| MS.32301.MI | Tower Extension Warning Switch | \$ 131 |
| FD.34154.TO | FIRECO 2 x 1500W 240V Halogen Omega Lights | \$ 475 |
| FB.33800 | Lookup Light | \$ 310 |
| CODE Z | Cable Z: (9)16ga + (13)24ga | \$ 226 |
| BK.30206 | Upper Mounting Bracket | \$ 131 |
| BK.30106 | Lower Mounting Bracket | \$ 70 |

Package List Price: \$9,902

OPTIONAL 2 x 1500W 240V Lighting

| Part Number | Description | Add |
|----------------|-----------------------|--------|
| OPA100-M15 (2) | Fire Research Optimum | \$ 643 |

OPTIONAL Dual Tilt and Turn

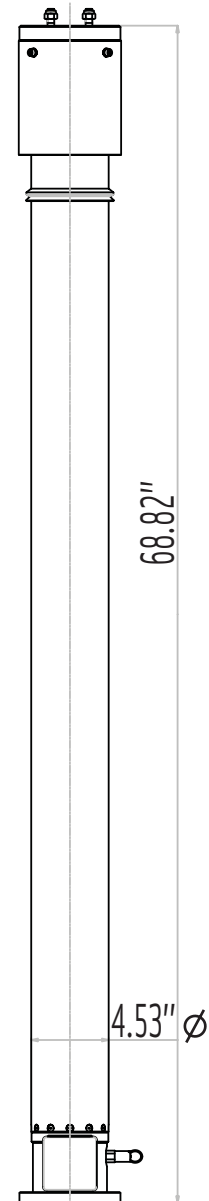
| Part Number | Description | Add |
|-------------|----------------------------------|----------|
| TT.31641 | DUAL Tilt/Turn 12V STANDARD | \$ 1,067 |
| RC.31748 | Wired Remote Control 3 motors | |
| RC.31749 | Wireless Remote Control 3 motors | |

OPTIONAL Smart Remote Control

| Part Number | Description | Add |
|-------------|--------------------------------------|--------|
| RC.31756 | SMART Remote Control (non-dual tilt) | \$ 100 |
| RC.31758 | SMART Remote Control (dual tilt) | \$ 150 |

OPTIONAL Mounting Bracket

| Part Number | Description | Add |
|-------------|---------------------|-------|
| BK.30056 | Square Roof Bracket | \$ 50 |



Tower Model CS3520NZ

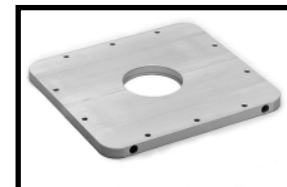
Featured Mounting Brackets



Standard BK.30206



Standard BK.30106



Optional BK.30056