

# 2100 Series

## 19-foot Tower, CS3520NZ (priced with 6 x 750W 120V Halogen)

### Specifications

Extended Height :	19' 7"	\$ 4,063
Retracted Height:	68"	
Max top load :	99 lbs.	
Base tube diameter :	4.53" (115mm)	
Number of sections :	Five	
Max wind speed :	74 mph @ 740 sq. in.	

### Standard Tower Features

Part Number	Description	Price
TT.31621	Non-Dual Tilt and Turn 12V STANDARD	\$ 2,690
RC.31747	Wireless Remote Control	\$ 429
RC.31746	Wired Remote Control	\$ 1,377
KR-36-WB (6)	Havis Shields 6 x 750W 120V Halogen Lights	\$ 2,265
MS.32301.MI	Tower Extension Warning Switch	\$ 131
FB.33800	Lookup Light	\$ 310
CODE Z	Cable Z: (9)16ga + (13)24ga	\$ 226
BK.30206	Upper Mounting Bracket	\$ 131
BK.30106	Lower Mounting Bracket	\$ 70

**Package List Price: \$11,692**

### OPTIONAL 6 x 750W 120V Lighting

Part Number	Description	Add
OPA100-S75 (6)	Fire Research Optimum	\$ 223

### OPTIONAL Dual Tilt and Turn

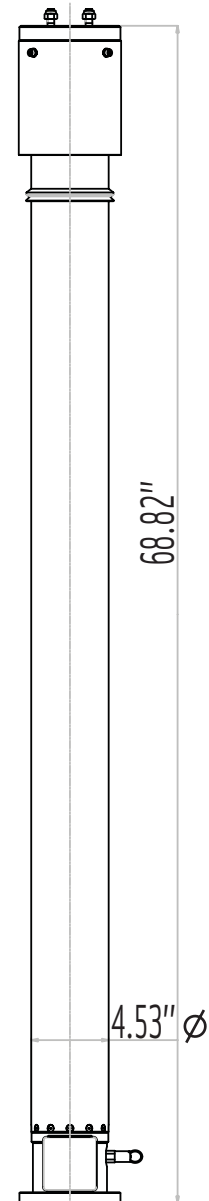
Part Number	Description	Add
TT.31641	DUAL Tilt/Turn 12V STANDARD	\$ 1,067
RC.31748	Wired Remote Control 3 motors	
RC.31749	Wireless Remote Control 3 motors	

### OPTIONAL Smart Remote Control

Part Number	Description	Add
RC.31756	SMART Remote Control (non-dual tilt)	\$ 100
RC.31758	SMART Remote Control (dual tilt)	\$ 150

### OPTIONAL Mounting Bracket

Part Number	Description	Add
BK.30056	Square Roof Bracket	\$ 50

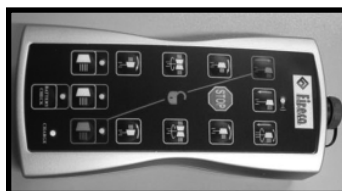


**Tower Model CS3520NZ**

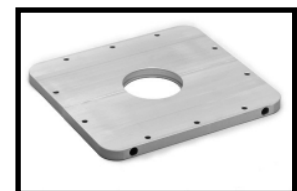
## Featured Options



Fire Research Optimum OPA100-S75 (6)



Smart Remote Dual Tilt RC.31758



Square Roof Bracket BK.30056