

17-foot Steady Tower CL6421N and CL6421T

Specifications

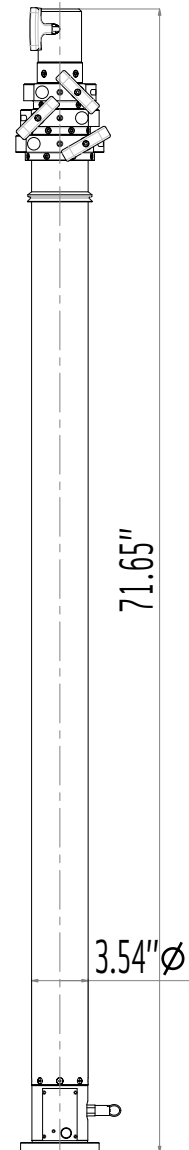
	CL6421N	CL6421T
	Non-Rotating	Manual Rotation
Extended Height :	17.3'	17.4'
Retracted Height:	72.3"	73.7"
Max top load :	55 pounds	55 pounds
Base tube diameter :	3.5" (90mm)	3.5" (90mm)
Number of sections :	Four	Four
Max wind speed :	75 mph / 372 in ²	75 mph / 372 in ²

Non-Rotating Tower		
Part Number	Description	Price
CL6421NA	Fixed (Non-Rotating)	\$ 3,922
GC.30902	Set of 3 guy collars - fixed on dia 51mm - 2"	\$ 67

Manual Rotation Tower		
Part Number	Description	Price
CL6421TA	Manual Rotating Base	\$ 4,174
GC.30802	Set of 3 rings on rotating guy collars on dia 51mm - 2"	\$ 156

Tower Options		
Part Number	Description	Price
RP.30602.T (3)	Guy ropes - 32 ft (10 m)	\$ 315
PK.30701 (3)	Standard Pickets	\$ 204
HA.31301	5 lb. Hammer	\$ 21
TP.35500	Bag for carrying ropes and pickets	\$ 126
FB.33800	Lookup Light	\$ 310
BK.30104	Lower Mounting Bracket	\$ 62
BK.30055	Square Roof Bracket	\$ 199
BK.30204	Upper Mounting Bracket	\$ 125
MS.32302	Reversed micro-switch	\$ 131

Internal Cable Options	
See Page 58	Cable must be less than 1.7" Diameter



Tower Model CL6421N

Product Fact

Your Investment is Protected

All Tempest Fireco Pneumatic Telescoping Towers are equipped with our exclusive keyway system to prevent tower rotation and reduce the risk of damage in windy conditions.