

# 1300 Series

## 17-foot Tower, CL3421NZ (priced with 2 x 150W 12V)

### Specifications

Extended Height :	17'	\$ 3,500
Retracted Height:	68"	
Max top load :	55 pounds	
Base tube diameter :	3.5" (90mm)	
Number of sections :	Four	
Max wind speed :	60 mph 372 sq.in.	

### Standard Tower Features

Part Number	Description	Price
TT.31603	Non-Dual Tilt and Turn 12V LIGHT	\$ 2,224
RC.31747	Wireless Remote Control	\$ 429
RC.31746	Wired Remote Control	\$ 1,377
OPA100-H15	FIRECO 2 x 150W 12V Lights	\$ 2,113
MS.32301.MI	Tower Extension Warning Switch	\$ 131
FB.33800	Lookup Light	\$ 310
CODE Z	Cable Z: (9)16ga + (13)24ga	\$ 226
BK.30204	Upper Mounting Bracket	\$ 125
BK.30104	Lower Mounting Bracket	\$ 62

**Package List Price: \$10,497**

### OPTIONAL 2 x 150W 12V Lighting

Part Number	Description	Add
KR-32	Havis Shields Magnafire	\$ 88

### OPTIONAL Dual Tilt and Turn

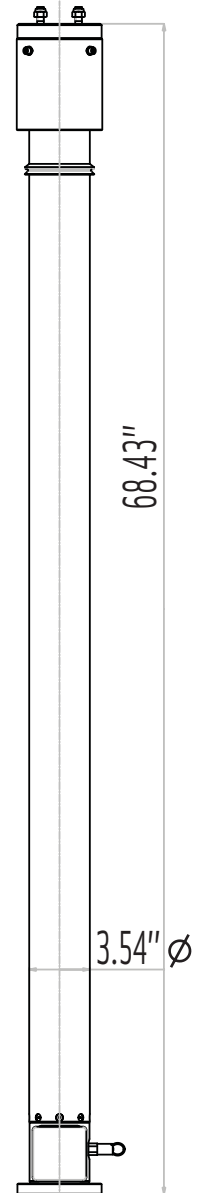
Part Number	Description	Add
TT.31641	DUAL Tilt/Turn 12V STANDARD	\$ 1,533
RC.31748	Wired Remote Control 3 motors	
RC.31749	Wireless Remote Control 3 motors	

### OPTIONAL Smart Remote Control

Part Number	Description	Add
RC.31756	SMART Remote Control (non-dual tilt)	\$ 100
RC.31758	SMART Remote Control (dual tilt)	\$ 150

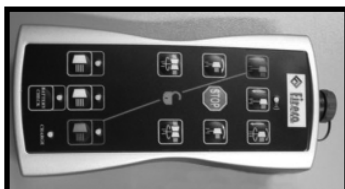
### OPTIONAL Mounting Bracket

Part Number	Description	Add
BK.30055	Square Roof Bracket	\$ 50

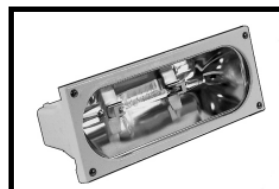


Tower Model CL3421NZ

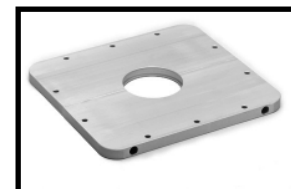
## Featured Options



Smart Remote Non-Dual Tilt RC.31756



Havis Shields Magnafire KR-32



Square Roof Bracket BK.30055