

19-foot Tower, CS3520NZ (priced with 4 x 750W 120V Halogen)

Specifications

Extended Height :	19' 7"	\$ 4,063
Retracted Height:	68"	
Max top load :	99 lbs.	
Base tube diameter :	4.53" (115mm)	
Number of sections :	Five	
Max wind speed :	74 mph @ 740 sq. in.	

Standard Tower Features

Part Number	Description	Price
TT.31621	Non-Dual Tilt and Turn 12V STANDARD	\$ 2,690
RC.31747	Wireless Remote Control	\$ 429
RC.31746	Wired Remote Control	\$ 1,377
MS.32301.MI	Tower Extension Warning Switch	\$ 131
FD.34125/750.110.T	FIRECO 4 x 750W 120V Halogen Lights	\$ 874
FB.33800	Lookup Light	\$ 310
CODE Z	Cable Z: (9)16ga + (13)24ga	\$ 226
BK.30206	Upper Mounting Bracket	\$ 131
BK.30106	Lower Mounting Bracket	\$ 70

Package List Price: \$10,301

OPTIONAL 4 x 750W 120V Lighting

Part Number	Description	Add
OPA100-S75 (4)	Fire Research Optimum	\$ 841
KR-36-WB (4)	Havis Shields Magnafire	\$ 692

OPTIONAL Dual Tilt and Turn

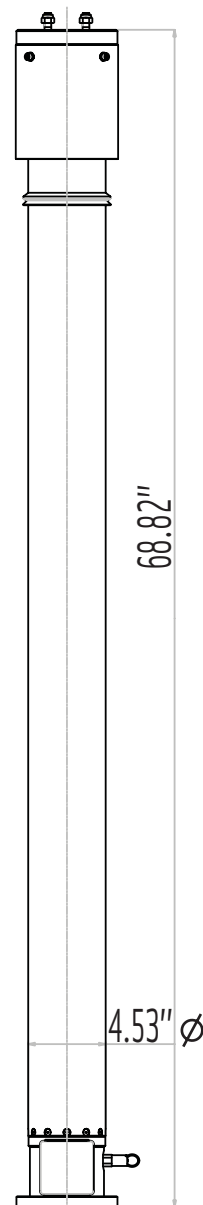
Part Number	Description	Add
TT.31641	DUAL Tilt/Turn 12V STANDARD	\$ 1,067
RC.31748	Wired Remote Control 3 motors	
RC.31749	Wireless Remote Control 3 motors	

OPTIONAL Smart Remote Control

Part Number	Description	Add
RC.31756	SMART Remote Control (non-dual tilt)	\$ 100
RC.31758	SMART Remote Control (dual tilt)	\$ 150

OPTIONAL Mounting Bracket

Part Number	Description	Add
BK.30056	Square Roof Bracket	\$ 50



Tower Model CS3520NZ

We're Here to Assist!

Customer Service Hours

Contact a Tempest Fireco Towers Customer Service Representative or Sales Team member for assistance with quotes and specifications. Customer Service is available Monday through Friday, 7am-5pm, PST.

2100 Series

19-foot Tower, CS3520NZ (priced with 6 x 750W 120V Halogen)

Specifications

Extended Height :	19' 7"	\$ 4,063
Retracted Height:	68"	
Max top load :	99 lbs.	
Base tube diameter :	4.53" (115mm)	
Number of sections :	Five	
Max wind speed :	74 mph @ 740 sq. in.	

Standard Tower Features

Part Number	Description	Price
TT.31621	Non-Dual Tilt and Turn 12V STANDARD	\$ 2,690
RC.31747	Wireless Remote Control	\$ 429
RC.31746	Wired Remote Control	\$ 1,377
KR-36-WB (6)	Havis Shields 6 x 750W 120V Halogen Lights	\$ 2,265
MS.32301.MI	Tower Extension Warning Switch	\$ 131
FB.33800	Lookup Light	\$ 310
CODE Z	Cable Z: (9)16ga + (13)24ga	\$ 226
BK.30206	Upper Mounting Bracket	\$ 131
BK.30106	Lower Mounting Bracket	\$ 70

Package List Price: \$11,692

OPTIONAL 6 x 750W 120V Lighting

Part Number	Description	Add
OPA100-S75 (6)	Fire Research Optimum	\$ 223

OPTIONAL Dual Tilt and Turn

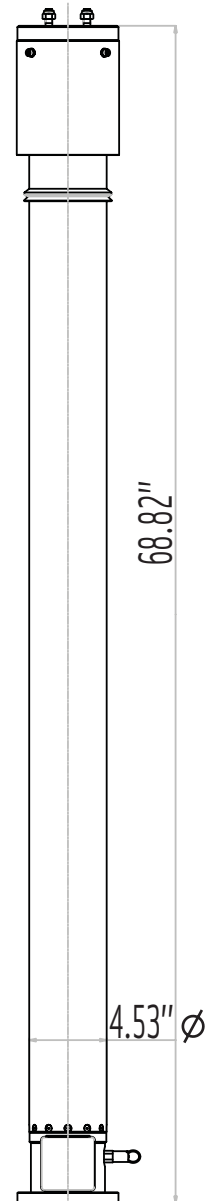
Part Number	Description	Add
TT.31641	DUAL Tilt/Turn 12V STANDARD	\$ 1,067
RC.31748	Wired Remote Control 3 motors	
RC.31749	Wireless Remote Control 3 motors	

OPTIONAL Smart Remote Control

Part Number	Description	Add
RC.31756	SMART Remote Control (non-dual tilt)	\$ 100
RC.31758	SMART Remote Control (dual tilt)	\$ 150

OPTIONAL Mounting Bracket

Part Number	Description	Add
BK.30056	Square Roof Bracket	\$ 50

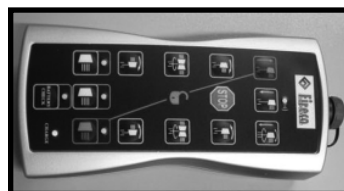


Tower Model CS3520NZ

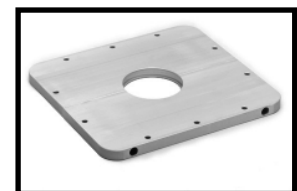
Featured Options



Fire Research Optimum OPA100-S75 (6)



Smart Remote Dual Tilt RC.31758



Square Roof Bracket BK.30056

19-foot Tower, CS3520NZ (priced with 4 x 900W 240V Halogen)

Specifications

Extended Height :	19' 7"	\$ 4,063
Retracted Height:	68"	
Max top load :	99 lbs.	
Base tube diameter :	4.53" (115mm)	
Number of sections :	Five	
Max wind speed :	74 mph @ 740 sq. in.	

Standard Tower Features

Part Number	Description	Price
TT.31621	Non-Dual Tilt and Turn 12V STANDARD	\$ 2,690
RC.31747	Wireless Remote Control	\$ 429
RC.31746	Wired Remote Control	\$ 1,377
KR-31-WB (4)	Havis Shields 4 x 900W 240V Lights	\$ 1,815
MS.32301.MI	Tower Extension Warning Switch	\$ 131
FB.33800	Lookup Light	\$ 310
CODE Z	Cable Z: (9)16ga + (13)24ga	\$ 226
BK.30206	Upper Mounting Bracket	\$ 131
BK.30106	Lower Mounting Bracket	\$ 70

Package List Price: \$11,242

OPTIONAL 4 x 900W 240V Lighting

Part Number	Description	Add
OPA100-R90 (4)	Fire Research Optimum	\$ 254

OPTIONAL Dual Tilt and Turn

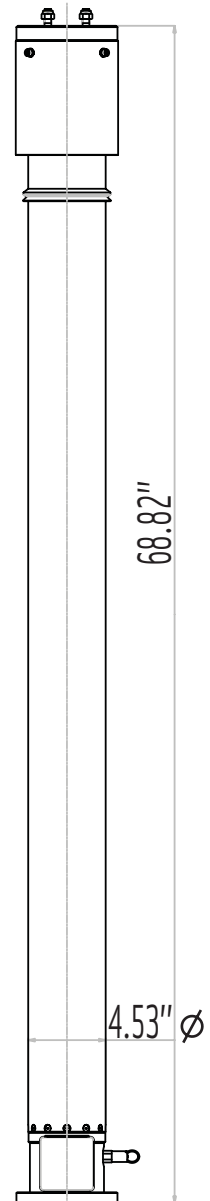
Part Number	Description	Add
TT.31641	DUAL Tilt/Turn 12V STANDARD	\$ 1,067
RC.31748	Wired Remote Control 3 motors	
RC.31749	Wireless Remote Control 3 motors	

OPTIONAL Smart Remote Control

Part Number	Description	Add
RC.31756	SMART Remote Control (non-dual tilt)	\$ 100
RC.31758	SMART Remote Control (dual tilt)	\$ 150

OPTIONAL Mounting Bracket

Part Number	Description	Add
BK.30056	Square Roof Bracket	\$ 50



Tower Model CS3520NZ

Product Fact

We Stand Behind Our Products

Every Tempest Fireco Tower, whether a custom configuration or stock off the shelf, is delivered with a standard 2-year warranty.

2100 Series

19-foot Tower, CS3520NZ (priced with 6 x 900W 240V)

Specifications

Extended Height :	19' 7"	\$ 4,063
Retracted Height:	68"	
Max top load :	99 lbs.	
Base tube diameter :	4.53" (115mm)	
Number of sections :	Five	
Max wind speed :	74 mph @ 740 sq. in.	

Standard Tower Features

Part Number	Description	Price
TT.31621	Non-Dual Tilt and Turn 12V STANDARD	\$ 2,690
RC.31747	Wireless Remote Control	\$ 429
RC.31746	Wired Remote Control	\$ 1,377
KR-31-WB (6)	Havis Shields 6 x 900W 240V Lights	\$ 2,639
MS.32301.MI	Tower Extension Warning Switch	\$ 131
FB.33800	Lookup Light	\$ 310
CODE Z	Cable Z: (9)16ga + (13)24ga	\$ 226
BK.30206	Upper Mounting Bracket	\$ 131
BK.30106	Lower Mounting Bracket	\$ 70

Package List Price: \$12,066

OPTIONAL 6 x 900W 240V Lighting

Part Number	Description	Add
OPA100-R90 (6)	Fire Research Optimum	\$ 380

OPTIONAL Dual Tilt and Turn

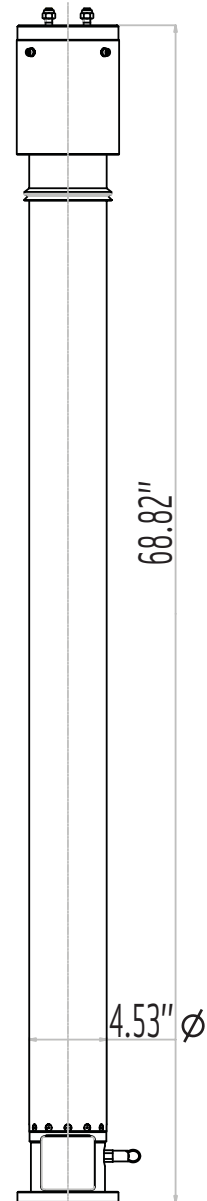
Part Number	Description	Add
TT.31641	DUAL Tilt/Turn 12V STANDARD	\$ 1,067
RC.31748	Wired Remote Control 3 motors	
RC.31749	Wireless Remote Control 3 motors	

OPTIONAL Smart Remote Control

Part Number	Description	Add
RC.31756	SMART Remote Control (non-dual tilt)	\$ 100
RC.31758	SMART Remote Control (dual tilt)	\$ 150

OPTIONAL Mounting Bracket

Part Number	Description	Add
BK.30056	Square Roof Bracket	\$ 50



Tower Model CS3520NZ

Pricing Structure

Here's how it works...

Locate the desired Tempest Fireco Tower in this catalog. The package list price is shown under the "Standard Tower Features" data table on each product page. Keep the package as is, or select from the options list below and add those product option prices to the package price.

19-foot Tower, CS3520NW (priced with 2 x 1000W 240V Metal Halide)

Specifications

Extended Height :	19' 7"	\$ 4,063
Retracted Height:	68"	
Max top load :	99 lbs.	
Base tube diameter :	4.53" (115mm)	
Number of sections :	Five	
Max wind speed :	74 mph @ 740 sq. in.	

Standard Tower Features

Part Number	Description	Price
TT.31621	Non-Dual Tilt and Turn 12V STANDARD	\$ 2,690
RC.31747	Wireless Remote Control	\$ 429
RC.31746	Wired Remote Control	\$ 1,377
MS.32301.MI	Tower Extension Warning Switch	\$ 131
FD.34321.T.ST	FIRECO 2 x 1000W 240V MH Lights	\$ 3,425
FB.33800	Lookup Light	\$ 310
CODE W	Cable W: 11x16awg + 8x20awg + 4x26awg + MICROCOAX 75 Ohm	\$ 332
BK.30206	Upper Mounting Bracket	\$ 131
BK.30106	Lower Mounting Bracket	\$ 70

Package List Price: \$12,958

OPTIONAL Dual Tilt and Turn

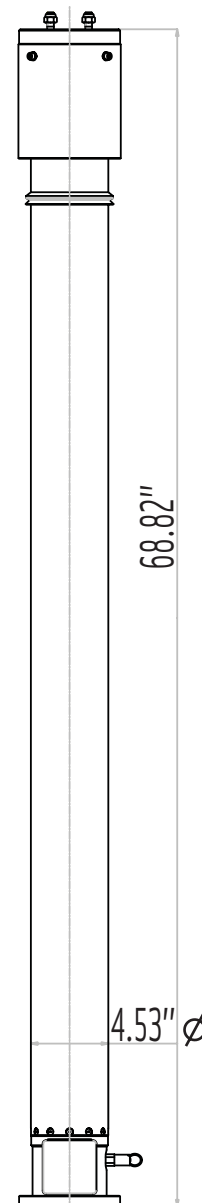
Part Number	Description	Add
TT.31641	DUAL Tilt/Turn 12V STANDARD	\$ 1,067
RC.31748	Wired Remote Control 3 motors	
RC.31749	Wireless Remote Control 3 motors	

OPTIONAL Smart Remote Control

Part Number	Description	Add
RC.31756	SMART Remote Control (non-dual tilt)	\$ 100
RC.31758	SMART Remote Control (dual tilt)	\$ 150

OPTIONAL Mounting Bracket

Part Number	Description	Add
BK.30056	Square Roof Bracket	\$ 50



Tower Model CS3520NW

We're Here to Assist!

Customer Service Hours

Contact a Tempest Fireco Towers Customer Service Representative or Sales Team member for assistance with quotes and specifications. Customer Service is available Monday through Friday, 7am-5pm, PST.

2100 Series

19-foot Tower, CS3520NZ (priced with 2 x 1500W 240V Halogen)

Specifications

Extended Height :	19' 7"	\$ 4,063
Retracted Height:	68"	
Max top load :	99 lbs.	
Base tube diameter :	4.53" (115mm)	
Number of sections :	Five	
Max wind speed :	74 mph @ 740 sq. in.	

Standard Tower Features

Part Number	Description	Price
TT.31621	Non-Dual Tilt and Turn 12V STANDARD	\$ 2,690
RC.31747	Wireless Remote Control	\$ 429
RC.31746	Wired Remote Control	\$ 1,377
MS.32301.MI	Tower Extension Warning Switch	\$ 131
FD.34154.TO	FIRECO 2 x 1500W 240V Halogen Omega Lights	\$ 475
FB.33800	Lookup Light	\$ 310
CODE Z	Cable Z: (9)16ga + (13)24ga	\$ 226
BK.30206	Upper Mounting Bracket	\$ 131
BK.30106	Lower Mounting Bracket	\$ 70

Package List Price: \$9,902

OPTIONAL 2 x 1500W 240V Lighting

Part Number	Description	Add
OPA100-M15 (2)	Fire Research Optimum	\$ 643

OPTIONAL Dual Tilt and Turn

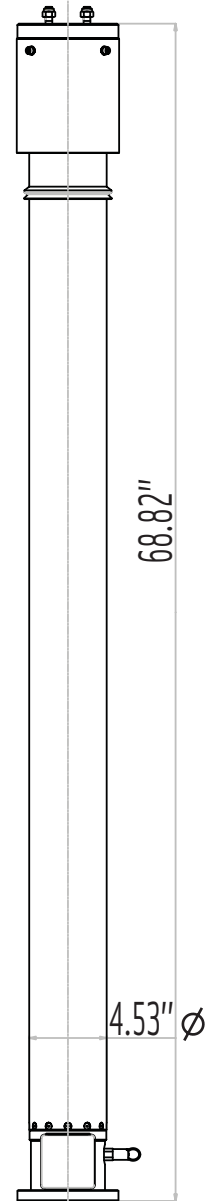
Part Number	Description	Add
TT.31641	DUAL Tilt/Turn 12V STANDARD	\$ 1,067
RC.31748	Wired Remote Control 3 motors	
RC.31749	Wireless Remote Control 3 motors	

OPTIONAL Smart Remote Control

Part Number	Description	Add
RC.31756	SMART Remote Control (non-dual tilt)	\$ 100
RC.31758	SMART Remote Control (dual tilt)	\$ 150

OPTIONAL Mounting Bracket

Part Number	Description	Add
BK.30056	Square Roof Bracket	\$ 50

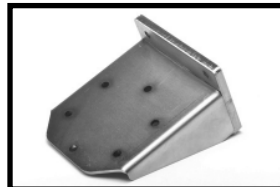


Tower Model CS3520NZ

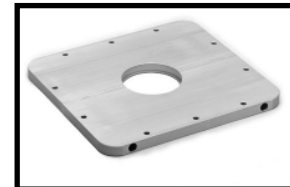
Featured Mounting Brackets



Standard BK.30206



Standard BK.30106



Optional BK.30056

19-foot Tower, CS3520NZ (priced with 4 x 1500W 240V Halogen)

Specifications

Extended Height :	19' 7"	\$ 4,063
Retracted Height:	68"	
Max top load :	99 lbs.	
Base tube diameter :	4.53" (115mm)	
Number of sections :	Five	
Max wind speed :	74 mph @ 740 sq. in.	

Standard Tower Features

Part Number	Description	Price
TT.31621	Non-Dual Tilt and Turn 12V STANDARD	\$ 2,690
RC.31747	Wireless Remote Control	\$ 429
RC.31746	Wired Remote Control	\$ 1,377
MS.32301.MI	Tower Extension Warning Switch	\$ 131
FD.34156.T	FIRECO 4 x 1500W 240V Halogen Lights	\$ 834
FB.33800	Lookup Light	\$ 310
CODE Z	Cable Z: (9)16ga + (13)24ga	\$ 226
BK.30206	Upper Mounting Bracket	\$ 131
BK.30106	Lower Mounting Bracket	\$ 70

Package List Price: \$10,261

OPTIONAL 4 x 1500W 240V Lighting

Part Number	Description	Add
OPA100-M15 (4)	Fire Research Optimum	\$ 1,235

OPTIONAL Dual Tilt and Turn

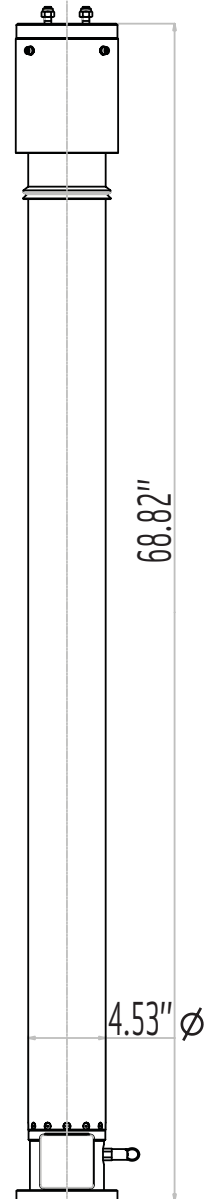
Part Number	Description	Add
TT.31641	DUAL Tilt/Turn 12V STANDARD	\$ 1,067
RC.31748	Wired Remote Control 3 motors	
RC.31749	Wireless Remote Control 3 motors	

OPTIONAL Smart Remote Control

Part Number	Description	Add
RC.31756	SMART Remote Control (non-dual tilt)	\$ 100
RC.31758	SMART Remote Control (dual tilt)	\$ 150

OPTIONAL Mounting Bracket

Part Number	Description	Add
BK.30056	Square Roof Bracket	\$ 50



Tower Model CS3520NZ

Product Fact

Protection Covers

Tempest Fireco Towers feature an upper tubular protection cover that keeps dust and water away from the seal rings when tower is in the retracted position.

2100 Series

19-foot Tower, CS3520NZ (priced with 6 x 1500W 240V Halogen)

Specifications

Extended Height :	19' 7"	\$ 4,063
Retracted Height:	68"	
Max top load :	99 lbs.	
Base tube diameter :	4.53" (115mm)	
Number of sections :	Five	
Max wind speed :	74 mph @ 740 sq. in.	

Standard Tower Features

Part Number	Description	Price
TT.31621	Non-Dual Tilt and Turn 12V STANDARD	\$ 2,690
RC.31747	Wireless Remote Control	\$ 429
RC.31746	Wired Remote Control	\$ 1,377
MS.32301.MI	Tower Extension Warning Switch	\$ 131
FD.34159.T	FIRECO 6 x 1500W 240V Halogen Lights	\$ 1,109
FB.33800	Lookup Light	\$ 310
CODE Z	Cable Z: (9)16ga + (13)24ga	\$ 226
BK.30206	Upper Mounting Bracket	\$ 131
BK.30106	Lower Mounting Bracket	\$ 70

Package List Price: \$10,536

OPTIONAL 6 x 1500W 240V Lighting

Part Number	Description	Add
OPA100-M15 (6)	Fire Research Optimum	\$ 1,910

OPTIONAL Dual Tilt and Turn

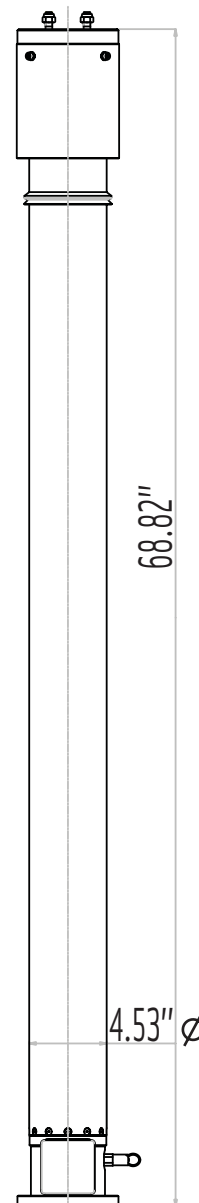
Part Number	Description	Add
TT.31641	DUAL Tilt/Turn 12V STANDARD	\$ 1,067
RC.31748	Wired Remote Control 3 motors	
RC.31749	Wireless Remote Control 3 motors	

OPTIONAL Smart Remote Control

Part Number	Description	Add
RC.31756	SMART Remote Control (non-dual tilt)	\$ 100
RC.31758	SMART Remote Control (dual tilt)	\$ 150

OPTIONAL Mounting Bracket

Part Number	Description	Add
BK.30056	Square Roof Bracket	\$ 50



Tower Model CS3520NZ

Pricing Structure

Here's how it works...

Locate the desired Tempest Fireco Tower in this catalog. The package list price is shown under the "Standard Tower Features" data table on each product page. Keep the package as is, or select from the options list below and add those product option prices to the package price.

19-foot Steady Tower CS6520N and CS6520T

Specifications

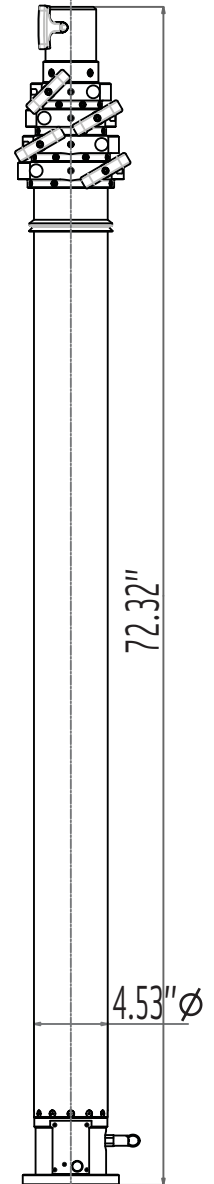
	CS6520N	CS6520T
	Non-Rotating	Manual Rotation
Extended Height :	19.9'	20'
Retracted Height:	72.3"	73.7"
Max top load :	110 lbs.	110 lbs.
Base tube diameter :	4.53" (115mm)	4.53" (115mm)
Number of sections :	Five	Five
Max wind speed :	75 mph / 740 in ²	75 mph / 740 in ²

Non-Rotating Tower		
Part Number	Description	Price
CS6520NA	Fixed (Non-Rotating)	\$ 4,862
GC.30903	Set of 3 guy collars - fixed on dia 64mm 2.52"	\$ 67

Manual Rotation Tower		
Part Number	Description	Price
CS6520TA	Manual Rotating Base	\$ 5,128
GC.30803	Set of 3 rings on turnable guy collars on dia 64mm 2.52"	\$ 185

Tower Options		
Part Number	Description	Price
RP.30602.T (3)	Guy ropes - 32 ft (10 m)	\$ 315
PK.30701 (3)	Standard Pickets	\$ 204
HA.31301	5 lb. Hammer	\$ 21
TP.35500	Bag for carrying ropes and pickets	\$ 126
FB.33800	Lookup Light	\$ 310
BK.30106	Lower Mounting Bracket	\$ 70
BK.30056	Square Roof Bracket	\$ 199
BK.30206	Upper Mounting Bracket	\$ 131
MS.32302	Reversed micro-switch	\$ 131

Internal Cable Options	
See Page 58	Cable must be less than 2.2" Diameter



Tower Model CS6520N

Lights, Cameras, and Communications

We're an OEM

Tempest Fireco Towers is an OEM for all major lighting manufacturers as well as many camera and communication manufacturers. Choose from popular brand names such as Havis-Shields, Fire Research Corporation, Tele-Lite, and Intec or R-Vision cameras, and also from our own Fireco brand of quality lighting products.