

# 1300 Series

## 17-foot Tower, CL3421NZ

(priced with 2 x 150W 12V)

### Specifications

|                      |                   |          |
|----------------------|-------------------|----------|
| Extended Height :    | 17'               | \$ 3,500 |
| Retracted Height:    | 68"               |          |
| Max top load :       | 55 pounds         |          |
| Base tube diameter : | 3.5" (90mm)       |          |
| Number of sections : | Four              |          |
| Max wind speed :     | 60 mph 372 sq.in. |          |

### Standard Tower Features

| Part Number | Description                      | Price    |
|-------------|----------------------------------|----------|
| TT.31603    | Non-Dual Tilt and Turn 12V LIGHT | \$ 2,224 |
| RC.31747    | Wireless Remote Control          | \$ 429   |
| RC.31746    | Wired Remote Control             | \$ 1,377 |
| OPA100-H15  | FIRECO 2 x 150W 12V Lights       | \$ 2,113 |
| MS.32301.MI | Tower Extension Warning Switch   | \$ 131   |
| FB.33800    | Lookup Light                     | \$ 310   |
| CODE Z      | Cable Z: (9)16ga + (13)24ga      | \$ 226   |
| BK.30204    | Upper Mounting Bracket           | \$ 125   |
| BK.30104    | Lower Mounting Bracket           | \$ 62    |

**Package List Price: \$10,497**

### OPTIONAL 2 x 150W 12V Lighting

| Part Number | Description             | Add   |
|-------------|-------------------------|-------|
| KR-32       | Havis Shields Magnafire | \$ 88 |

### OPTIONAL Dual Tilt and Turn

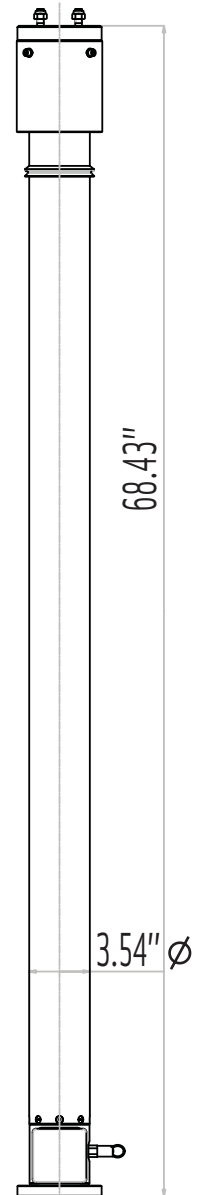
| Part Number | Description                      | Add      |
|-------------|----------------------------------|----------|
| TT.31641    | DUAL Tilt/Turn 12V STANDARD      | \$ 1,533 |
| RC.31748    | Wired Remote Control 3 motors    |          |
| RC.31749    | Wireless Remote Control 3 motors |          |

### OPTIONAL Smart Remote Control

| Part Number | Description                          | Add    |
|-------------|--------------------------------------|--------|
| RC.31756    | SMART Remote Control (non-dual tilt) | \$ 100 |
| RC.31758    | SMART Remote Control (dual tilt)     | \$ 150 |

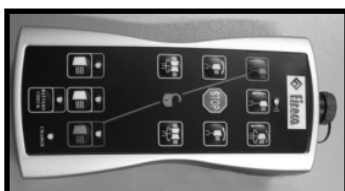
### OPTIONAL Mounting Bracket

| Part Number | Description         | Add   |
|-------------|---------------------|-------|
| BK.30055    | Square Roof Bracket | \$ 50 |

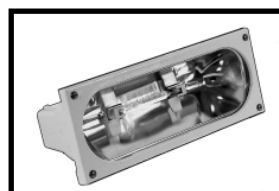


**Tower Model CL3421NZ**

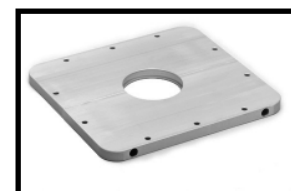
## Featured Options



Smart Remote Non-Dual Tilt RC.31756



Havis Shields Magnafire KR-32



Square Roof Bracket BK.30055

## 17-foot Tower, CL3421NZ (priced with 4 x 500W 120V Halogen)

### Specifications

|                      |                   |          |
|----------------------|-------------------|----------|
| Extended Height :    | 17'               | \$ 3,500 |
| Retracted Height:    | 68"               |          |
| Max top load :       | 55 pounds         |          |
| Base tube diameter : | 3.5" (90mm)       |          |
| Number of sections : | Four              |          |
| Max wind speed :     | 60 mph 372 sq.in. |          |

### Standard Tower Features

| Part Number    | Description                         | Price    |
|----------------|-------------------------------------|----------|
| TT.31603       | Non-Dual Tilt and Turn 12V LIGHT    | \$ 2,224 |
| RC.31747       | Wireless Remote Control             | \$ 429   |
| RC.31746       | Wired Remote Control                | \$ 1,377 |
| MS.32301.MI    | Tower Extension Warning Switch      | \$ 131   |
| FD.34105.T/110 | FIRECO 4 x 500W 120V Halogen Lights | \$ 513   |
| FB.33800       | Lookup Light                        | \$ 310   |
| CODE Z         | Cable Z: (9)16ga + (13)24ga         | \$ 226   |
| BK.30204       | Upper Mounting Bracket              | \$ 125   |
| BK.30104       | Lower Mounting Bracket              | \$ 62    |

**Package List Price: \$8,897**

### OPTIONAL 4 x 500W 120V Lighting

| Part Number    | Description             | Add      |
|----------------|-------------------------|----------|
| OPA100-S50 (4) | Fire Research Optimum   | \$ 1,202 |
| KR-55-WB (4)   | Havis Shields Magnafire | \$ 1,010 |

### OPTIONAL Dual Tilt and Turn

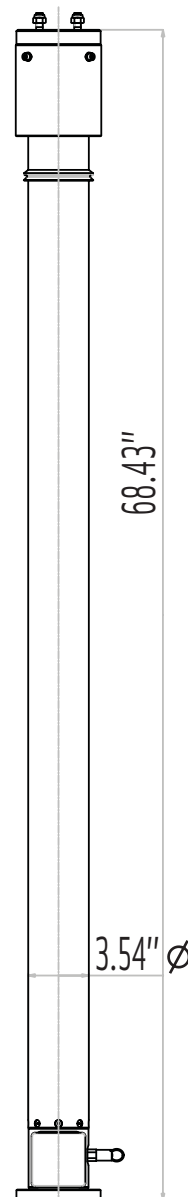
| Part Number | Description                      | Add      |
|-------------|----------------------------------|----------|
| TT.31641    | DUAL Tilt/Turn 12V STANDARD      | \$ 1,533 |
| RC.31748    | Wired Remote Control 3 motors    |          |
| RC.31749    | Wireless Remote Control 3 motors |          |

### OPTIONAL Smart Remote Control

| Part Number | Description                          | Add    |
|-------------|--------------------------------------|--------|
| RC.31756    | SMART Remote Control (non-dual tilt) | \$ 100 |
| RC.31758    | SMART Remote Control (dual tilt)     | \$ 150 |

### OPTIONAL Mounting Bracket

| Part Number | Description         | Add   |
|-------------|---------------------|-------|
| BK.30055    | Square Roof Bracket | \$ 50 |



**Tower Model CL3421NZ**

## Product Fact

### Mounting Brackets Standard

Tempest Fireco Towers are provided standard with pre-drilled upper and lower mounting brackets. Other mounting brackets are available to suit numerous installations.

# 1300 Series

## 17-foot Tower, CL3421NZ (priced with 4 x 750W 120V Halogen)

### Specifications

|                      |                   |          |
|----------------------|-------------------|----------|
| Extended Height :    | 17'               | \$ 3,500 |
| Retracted Height:    | 68"               |          |
| Max top load :       | 55 pounds         |          |
| Base tube diameter : | 3.5" (90mm)       |          |
| Number of sections : | Four              |          |
| Max wind speed :     | 60 mph 372 sq.in. |          |

#### Standard Tower Features

| Part Number        | Description                         | Price    |
|--------------------|-------------------------------------|----------|
| TT.31621           | Non-Dual Tilt and Turn 12V STANDARD | \$ 2,690 |
| RC.31747           | Wireless Remote Control             | \$ 429   |
| RC.31746           | Wired Remote Control                | \$ 1,377 |
| MS.32301.MI        | Tower Extension Warning Switch      | \$ 131   |
| FD.34125/750.110.T | FIRECO 4 x 750W 120V Halogen Lights | \$ 874   |
| FB.33800           | Lookup Light                        | \$ 310   |
| CODE Z             | Cable Z: (9)16ga + (13)24ga         | \$ 226   |
| BK.30204           | Upper Mounting Bracket              | \$ 125   |
| BK.30104           | Lower Mounting Bracket              | \$ 62    |

**Package List Price: \$9,724**

#### OPTIONAL 4 x 750W 120V Lighting

| Part Number    | Description             | Add    |
|----------------|-------------------------|--------|
| OPA100-S75 (4) | Fire Research Optimum   | \$ 841 |
| KR-36-WB (4)   | Havis Shields Magnafire | \$ 692 |

#### OPTIONAL Dual Tilt and Turn

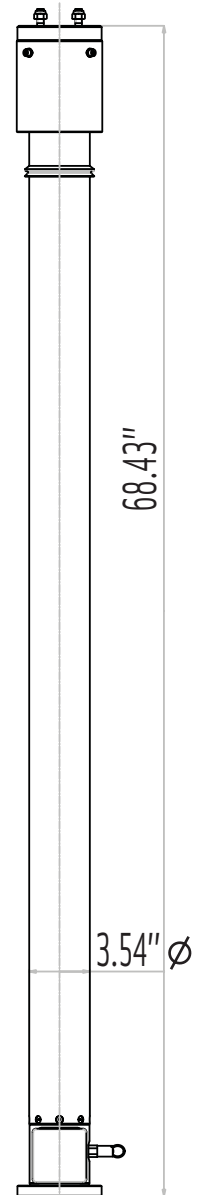
| Part Number | Description                      | Add      |
|-------------|----------------------------------|----------|
| TT.31641    | DUAL Tilt/Turn 12V STANDARD      | \$ 1,067 |
| RC.31748    | Wired Remote Control 3 motors    |          |
| RC.31749    | Wireless Remote Control 3 motors |          |

#### OPTIONAL Smart Remote Control

| Part Number | Description                          | Add    |
|-------------|--------------------------------------|--------|
| RC.31756    | SMART Remote Control (non-dual tilt) | \$ 100 |
| RC.31758    | SMART Remote Control (dual tilt)     | \$ 150 |

#### OPTIONAL Mounting Bracket

| Part Number | Description         | Add   |
|-------------|---------------------|-------|
| BK.30055    | Square Roof Bracket | \$ 50 |



**Tower Model CL3421NZ**

## Lights, Cameras, and Communications

### We're an OEM

Tempest Fireco Towers is an OEM for all major lighting manufacturers as well as many camera and communication manufacturers. Choose from popular brand names such as Havis-Shields, Fire Research Corporation, Tele-Lite, and Intec or R-Vision cameras, and also from our own Fireco brand of quality lighting products.

## 17-foot Tower, CL3421NZ (priced with 4 x 900W 240V Halogen)

### Specifications

|                      |                   |          |
|----------------------|-------------------|----------|
| Extended Height :    | 17'               | \$ 3,500 |
| Retracted Height:    | 68"               |          |
| Max top load :       | 55 pounds         |          |
| Base tube diameter : | 3.5" (90mm)       |          |
| Number of sections : | Four              |          |
| Max wind speed :     | 60 mph 372 sq.in. |          |

#### Standard Tower Features

| Part Number  | Description                                | Price    |
|--------------|--|----------|
| TT.31621     | Non-Dual Tilt and Turn 12V STANDARD        | \$ 2,690 |
| RC.31747     | Wireless Remote Control                    | \$ 429   |
| RC.31746     | Wired Remote Control                       | \$ 1,377 |
| KR-31-WB (4) | Havis Shields 4 x 900W 240V Halogen Lights | \$ 1,815 |
| MS.32301.MI  | Tower Extension Warning Switch             | \$ 131   |
| FB.33800     | Lookup Light                               | \$ 310   |
| CODE Z       | Cable Z: (9)16ga + (13)24ga                | \$ 226   |
| BK.30204     | Upper Mounting Bracket                     | \$ 125   |
| BK.30104     | Lower Mounting Bracket                     | \$ 62    |

**Package List Price: \$10,665**

#### OPTIONAL 4 x 900W 240V Lighting

| Part Number    | Description           | Add    |
|----------------|-----------------------|--------|
| OPA100-R90 (4) | Fire Research Optimum | \$ 254 |

#### OPTIONAL Dual Tilt and Turn

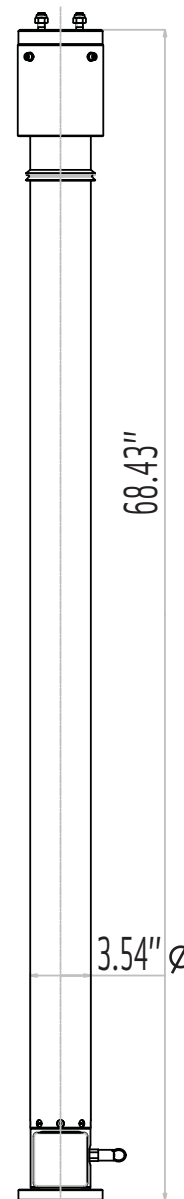
| Part Number | Description                      | Add      |
|-------------|----------------------------------|----------|
| TT.31641    | DUAL Tilt/Turn 12V STANDARD      | \$ 1,067 |
| RC.31748    | Wired Remote Control 3 motors    |          |
| RC.31749    | Wireless Remote Control 3 motors |          |

#### OPTIONAL Smart Remote Control

| Part Number | Description                          | Add    |
|-------------|--------------------------------------|--------|
| RC.31756    | SMART Remote Control (non-dual tilt) | \$ 100 |
| RC.31758    | SMART Remote Control (dual tilt)     | \$ 150 |

#### OPTIONAL Mounting Bracket

| Part Number | Description         | Add   |
|-------------|---------------------|-------|
| BK.30055    | Square Roof Bracket | \$ 50 |



**Tower Model CL3421NZ**

## We're Here to Assist!

### Customer Service Hours

Contact a Tempest Fireco Towers Customer Service Representative or Sales Team member for assistance with quotes and specifications. Customer Service is available Monday through Friday, 7am-5pm, PST.

# 1300 Series

## 17-foot Tower, CL3421NZ (priced with 2 x 1500W 240V Halogen)

### Specifications

|                      |                   |          |
|----------------------|-------------------|----------|
| Extended Height :    | 17'               | \$ 3,500 |
| Retracted Height:    | 68"               |          |
| Max top load :       | 55 pounds         |          |
| Base tube diameter : | 3.5" (90mm)       |          |
| Number of sections : | Four              |          |
| Max wind speed :     | 60 mph 372 sq.in. |          |

### Standard Tower Features

| Part Number | Description                                | Price    |
|-------------|--|----------|
| TT.31603    | Non-Dual Tilt and Turn 12V LIGHT           | \$ 2,224 |
| RC.31747    | Wireless Remote Control                    | \$ 429   |
| RC.31746    | Wired Remote Control                       | \$ 1,377 |
| MS.32301.MI | Tower Extension Warning Switch             | \$ 131   |
| FD.34154.TO | FIRECO 2 x 1500W 240V Halogen Omega Lights | \$ 475   |
| FB.33800    | Lookup Light                               | \$ 310   |
| CODE Z      | Cable Z: (9)16ga + (13)24ga                | \$ 226   |
| BK.30204    | Upper Mounting Bracket                     | \$ 125   |
| BK.30104    | Lower Mounting Bracket                     | \$ 62    |

**Package List Price: \$8,859**

### OPTIONAL 2 x 1500W 240V Lighting

| Part Number    | Description           | Add    |
|----------------|-----------------------|--------|
| OPA100-M15 (2) | Fire Research Optimum | \$ 643 |

### OPTIONAL Dual Tilt and Turn

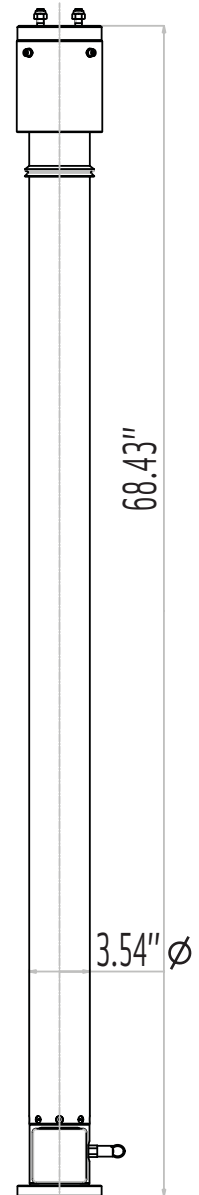
| Part Number | Description                      | Add      |
|-------------|----------------------------------|----------|
| TT.31641    | DUAL Tilt/Turn 12V STANDARD      | \$ 1,533 |
| RC.31748    | Wired Remote Control 3 motors    |          |
| RC.31749    | Wireless Remote Control 3 motors |          |

### OPTIONAL Smart Remote Control

| Part Number | Description                          | Add    |
|-------------|--------------------------------------|--------|
| RC.31756    | SMART Remote Control (non-dual tilt) | \$ 100 |
| RC.31758    | SMART Remote Control (dual tilt)     | \$ 150 |

### OPTIONAL Mounting Bracket

| Part Number | Description         | Add   |
|-------------|---------------------|-------|
| BK.30055    | Square Roof Bracket | \$ 50 |



Tower Model CL3421NZ

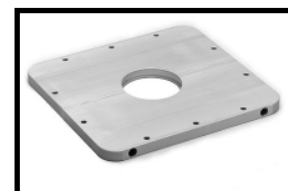
## Featured Mounting Brackets



Standard BK.30204



Standard BK.30104



Optional BK.30055

## 17-foot Steady Tower CL6421N and CL6421T

### Specifications

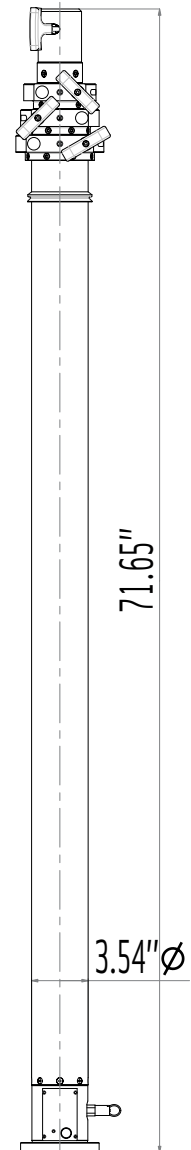
|                      | CL6421N                      | CL6421T                      |
|----------------------|------------------------------|------------------------------|
|                      | Non-Rotating                 | Manual Rotation              |
| Extended Height :    | 17.3'                        | 17.4'                        |
| Retracted Height:    | 72.3"                        | 73.7"                        |
| Max top load :       | 55 pounds                    | 55 pounds                    |
| Base tube diameter : | 3.5" (90mm)                  | 3.5" (90mm)                  |
| Number of sections : | Four                         | Four                         |
| Max wind speed :     | 75 mph / 372 in <sup>2</sup> | 75 mph / 372 in <sup>2</sup> |

| Non-Rotating Tower |   |          |
|--------------------|---|----------|
| Part Number        | Description                                   | Price    |
| CL6421NA           | Fixed (Non-Rotating)                          | \$ 3,922 |
| GC.30902           | Set of 3 guy collars - fixed on dia 51mm - 2" | \$ 67    |

| Manual Rotation Tower |   |          |
|-----------------------|---|----------|
| Part Number           | Description   | Price    |
| CL6421TA              | Manual Rotating Base                                    | \$ 4,174 |
| GC.30802              | Set of 3 rings on rotating guy collars on dia 51mm - 2" | \$ 156   |

| Tower Options  |                                    |        |
|----------------|------------------------------------|--------|
| Part Number    | Description                        | Price  |
| RP.30602.T (3) | Guy ropes - 32 ft (10 m)           | \$ 315 |
| PK.30701 (3)   | Standard Pickets                   | \$ 204 |
| HA.31301       | 5 lb. Hammer                       | \$ 21  |
| TP.35500       | Bag for carrying ropes and pickets | \$ 126 |
| FB.33800       | Lookup Light                       | \$ 310 |
| BK.30104       | Lower Mounting Bracket             | \$ 62  |
| BK.30055       | Square Roof Bracket                | \$ 199 |
| BK.30204       | Upper Mounting Bracket             | \$ 125 |
| MS.32302       | Reversed micro-switch              | \$ 131 |

| Internal Cable Options |                                       |
|------------------------|---------------------------------------|
| See Page 58            | Cable must be less than 1.7" Diameter |



Tower Model CL6421N

## Product Fact

### Your Investment is Protected

All Tempest Fireco Pneumatic Telescoping Towers are equipped with our exclusive keyway system to prevent tower rotation and reduce the risk of damage in windy conditions.