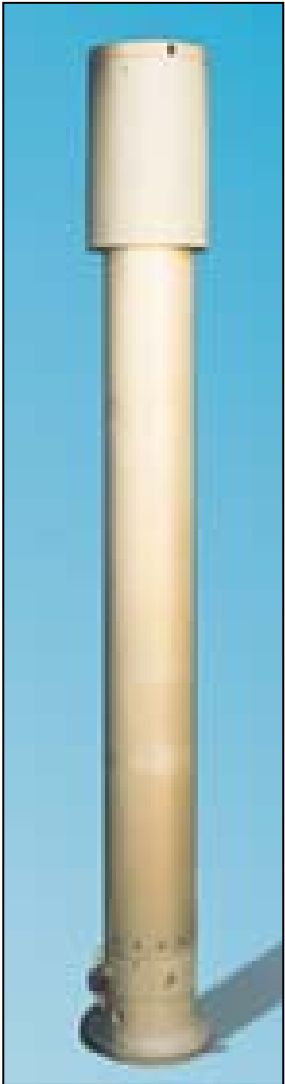


<b>Model: CX4103NZ (non-rotating)</b>	
<b>Base tube diameter:</b>	7.87" (200mm)
<b>Number of sections:</b>	Eleven
<b>Extended Height:</b>	41'
<b>Retracted Height:</b>	80"
<b>Max top load:</b>	176 lbs.
<b>Max wind speed:</b>	62 mph @ 742 sq. in.
<b>Internal Cable Option "Z":</b>	(9)16ga + (13)24ga



- Tower features an upper tubular protection cover that keeps dust and water away from the seal rings when in the retracted position.
- Tower is suitable for mounting on vehicles and can accommodate floodlights, cameras or antennas.
- Tower comes equipped with our exclusive keyway system, which prevents tower rotation and damage in windy conditions.
- Tower is provided with pre-drilled lower mounting and upper head assembly brackets for equipment mounting.
- An air safety valve for over-pressure and condensation drainage is standard as are water drainage holes to avoid freezing at lower temperatures.
- Pneumatic height extension may be achieved with a compressed air supply from chassis air brakes, breathing air system or a small electric air compressor.
- During retraction, an integral pneumatic shock absorption system safely lowers the tower, protecting floodlights and other equipment mounted on the tower.
- Tower requires no routine lubrication. All internal lubrication is performed during assembly and is good for the life of the tower.

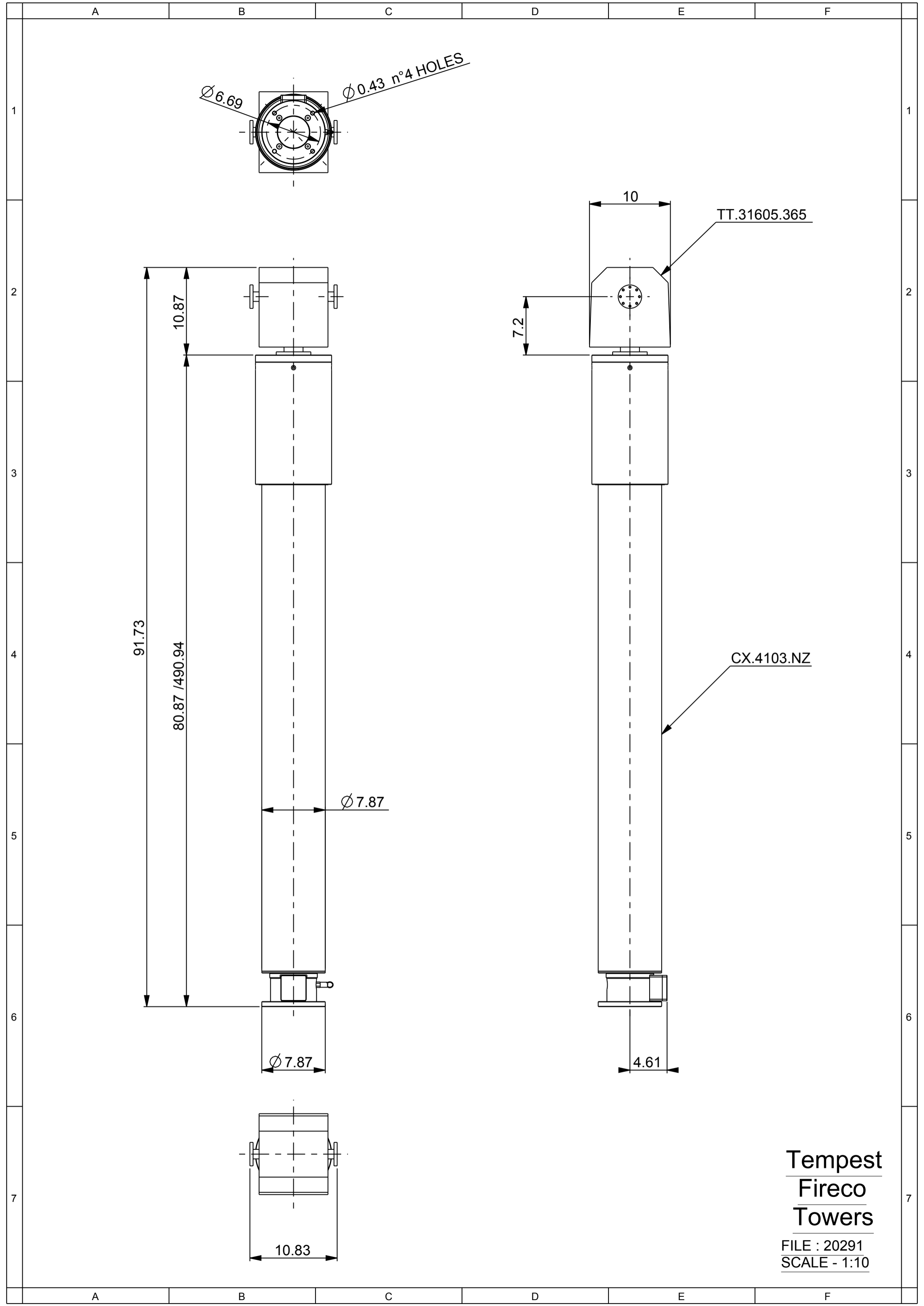


**Tilt/Turn Option:** 12V "Heavy Duty" tilt/turn model TT31603365. Features 365 degree rotation and "auto-stow" via remote control. Capacity: 110 lbs.



**Tower Mounting Brackets**

Refer to the Tempest Fireco Towers Catalog-103 for more detailed specifications and information.



Tempest  
Fireco  
Towers  
FILE : 20291  
SCALE - 1:10