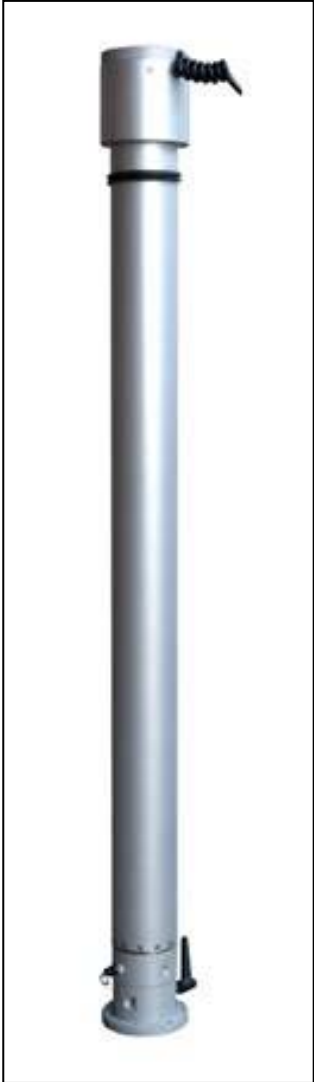


| Model: CS3520NZ (non-rotating) | |
|---------------------------------------|----------------------|
| Base tube diameter: | 4.53" (115mm) |
| Number of sections: | Five |
| Extended Height: | 19' 7" |
| Retracted Height: | 68" |
| Max top load: | 99 lbs. |
| Max wind speed: | 74 mph @ 740 sq. in. |
| Internal Cable Option "Z": | (9)16ga + (13)24ga |

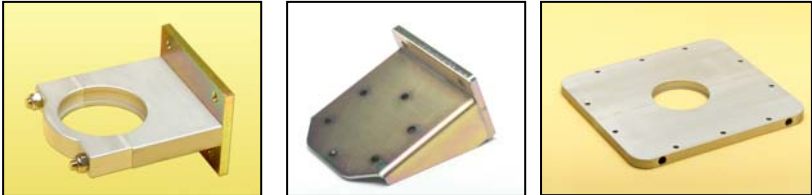


- Tower features an upper tubular protection cover that keeps dust and water away from the seal rings when in the retracted position.
- Tower is suitable for mounting on vehicles and can accommodate floodlights, cameras or antennas.
- Tower comes equipped with our exclusive keyway system, which prevents tower rotation and damage in windy conditions.
- Tower is provided with pre-drilled lower mounting and upper head assembly brackets for equipment mounting.
- An air safety valve for over-pressure and condensation drainage is standard as are water drainage holes to avoid freezing at lower temperatures.
- Pneumatic height extension may be achieved from a manual hand pump system, compressed air supply from chassis air brakes, breathing air system or a small electric air compressor.
- During retraction, an integral pneumatic shock absorption system safely lowers the tower, protecting floodlights and other equipment mounted on the tower.
- Tower requires no routine lubrication. All internal lubrication is performed during assembly and is good for the life of the tower.

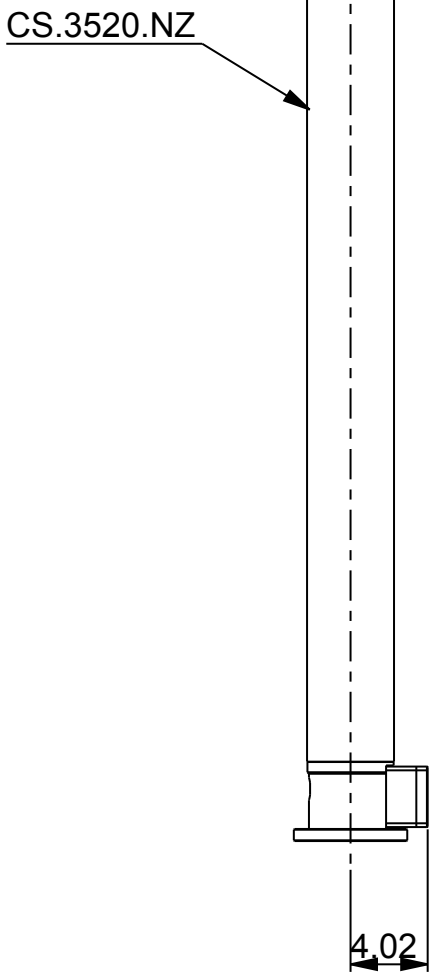
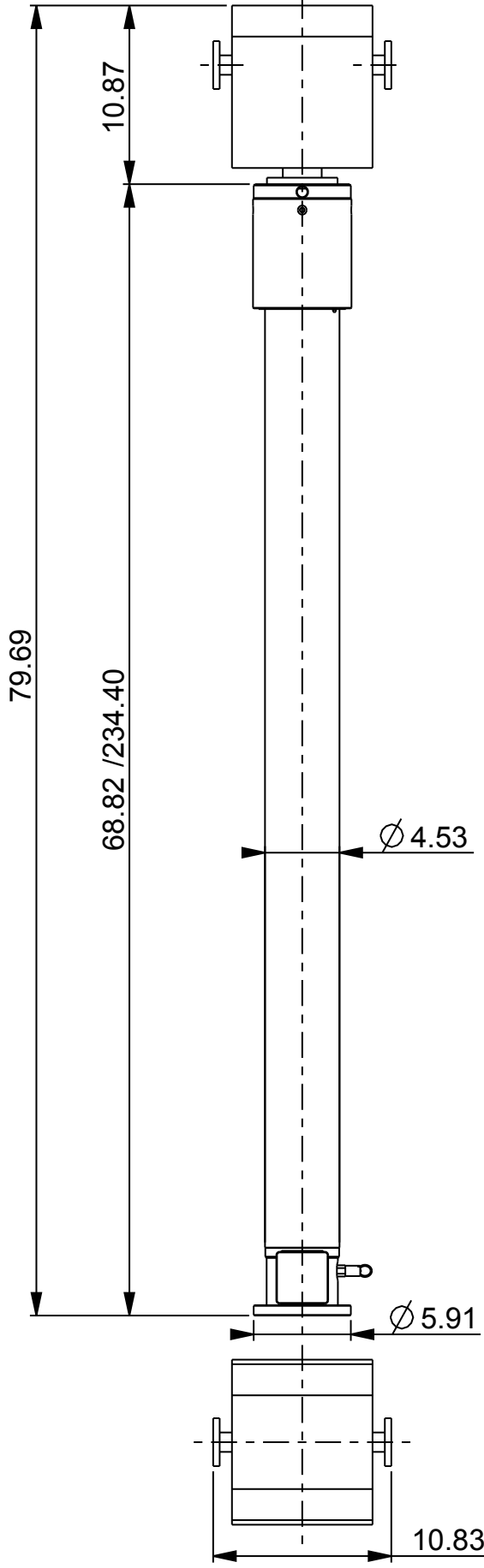
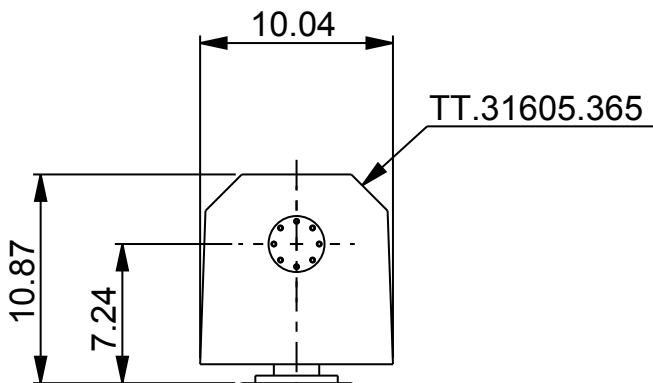
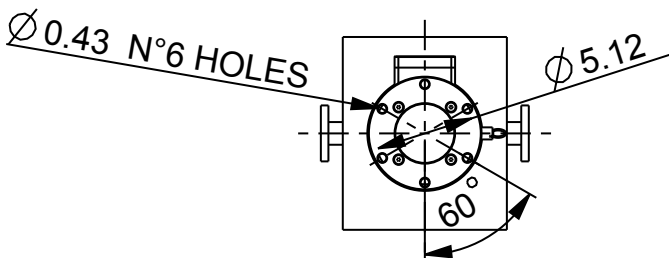
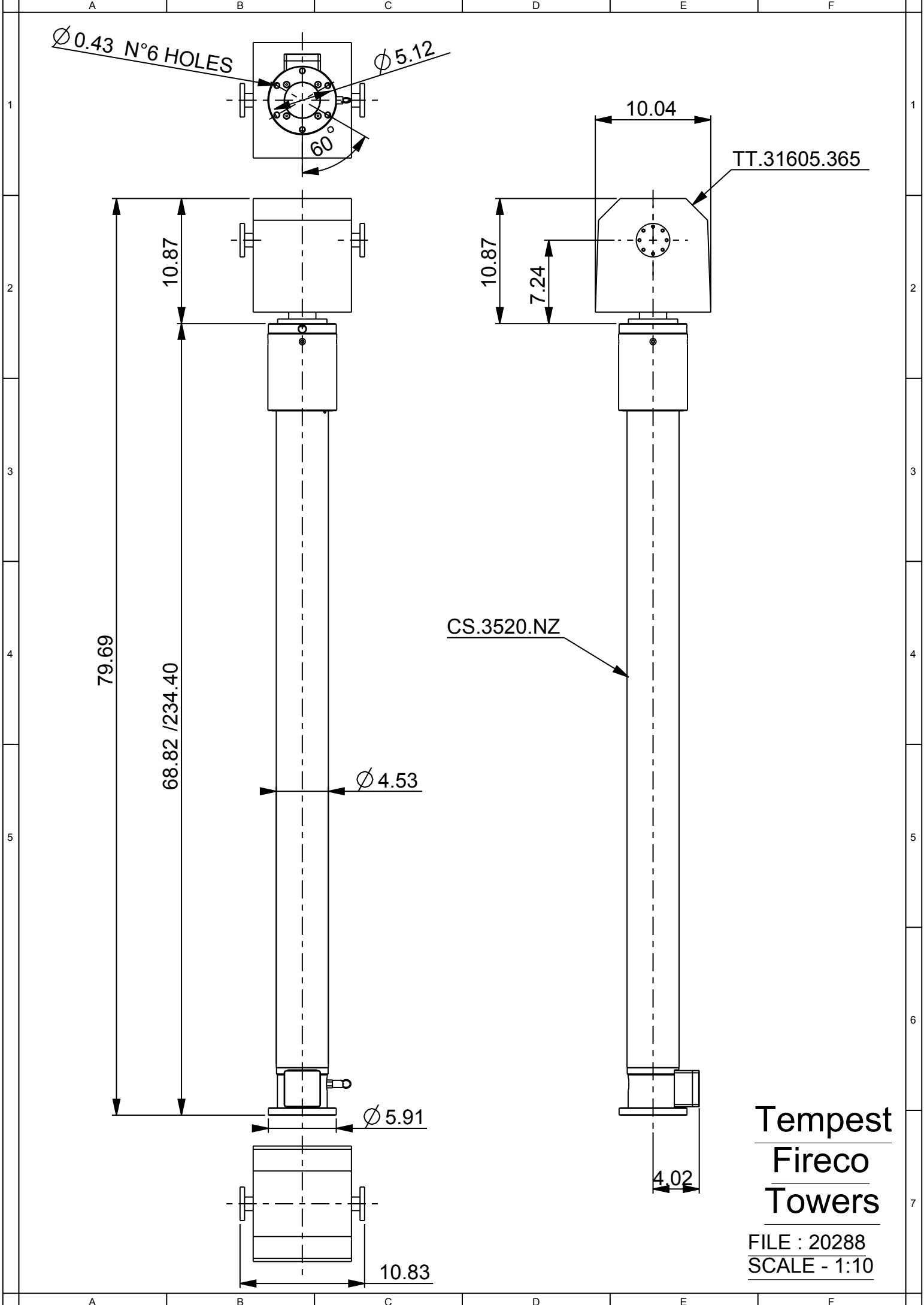


Tilt/Turn Option: 12V "Heavy Duty" tilt/turn model TT31603365. Features 365 degree rotation and "auto-stow" via remote control. Capacity: 110 lbs.

Refer to the Tempest Fireco Towers Catalog-103 for more detailed specifications and information.



Tower Mounting Brackets



**Tempest
Fireco
Towers**

FILE : 20288
SCALE - 1:10