

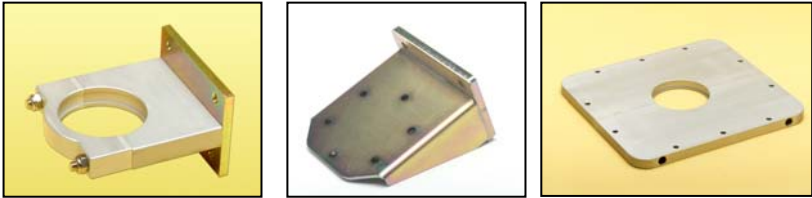
Model: CH3718NZ (non-rotating)	
Base tube diameter:	4.98" (152mm)
Number of sections:	Seven
Extended Height:	26' 5"
Retracted Height:	73"
Max top load:	265 lbs.
Max wind speed:	68 mph @ 742 sq. in.
Internal Cable Option "Z":	(9)16ga + (13)24ga



- Tower features an upper tubular protection cover that keeps dust and water away from the seal rings when in the retracted position.
- Tower is suitable for mounting on vehicles and can accommodate floodlights, cameras or antennas.
- Tower comes equipped with our exclusive keyway system, which prevents tower rotation and damage in windy conditions.
- Tower is provided with pre-drilled lower mounting and upper head assembly brackets for equipment mounting.
- An air safety valve for over-pressure and condensation drainage is standard as are water drainage holes to avoid freezing at lower temperatures.
- Pneumatic height extension may be achieved with a compressed air supply from chassis air brakes, breathing air system or a small electric air compressor.
- During retraction, an integral pneumatic shock absorption system safely lowers the tower, protecting floodlights and other equipment mounted on the tower.
- Tower requires no routine lubrication. All internal lubrication is performed during assembly and is good for the life of the tower.



Tilt/Turn Option: 12V "Heavy Duty" tilt/turn model TT31603365. Features 365 degree rotation and "auto-stow" via remote control. Capacity: 110 lbs.

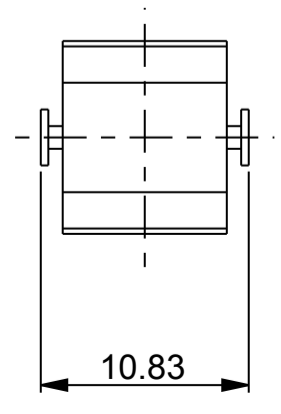
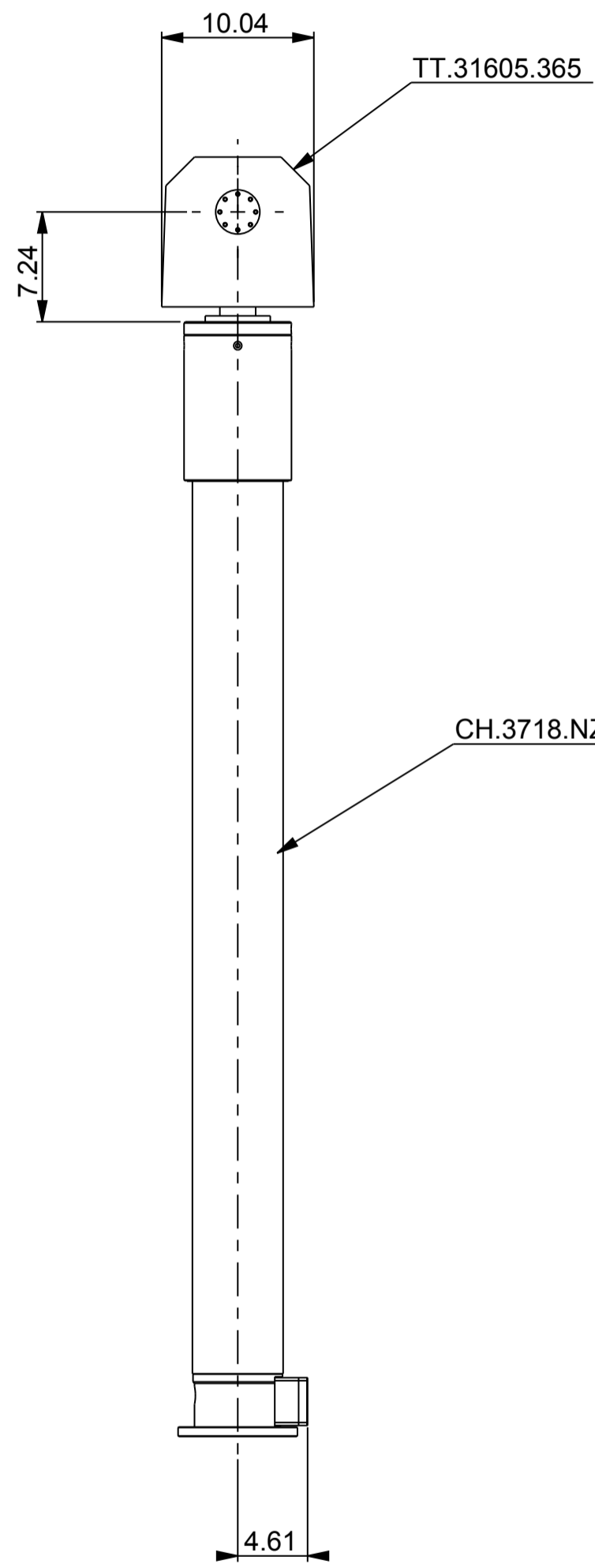
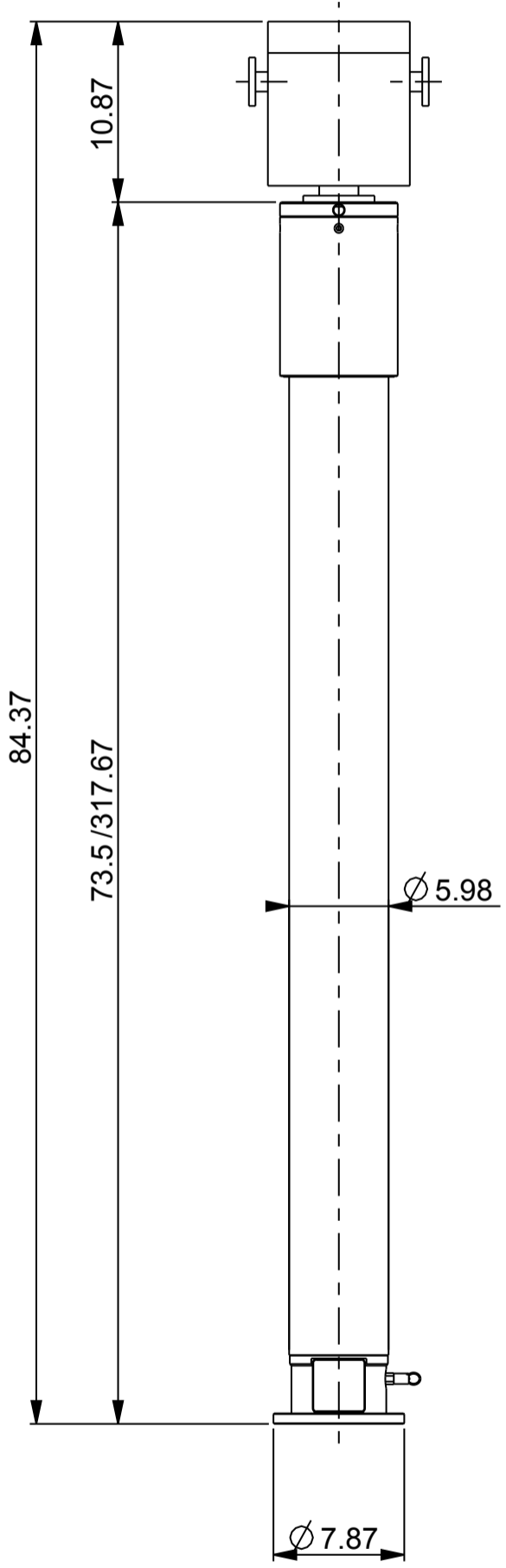
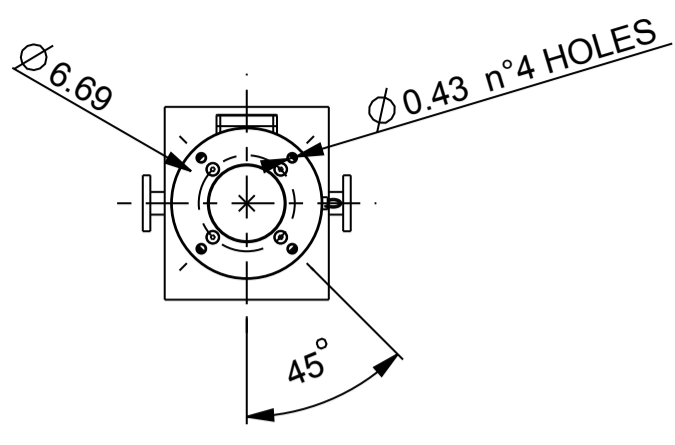


Refer to the Tempest Fireco Towers Catalog-103 for more detailed specifications and information.

Tower Mounting Brackets

A B C D E F

1
2
3
4
5
6
7



**Tempest
 Fireco
 Towers**

FILE : 20289
 SCALE - 1:10

A B C D E F