

12-foot Steady Tower CL6419N and CL6419T

Specifications

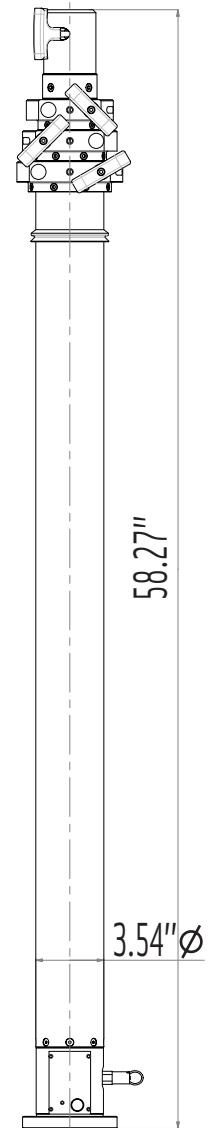
	CL6419N	CL6419T
	Non-Rotating	Manual Rotation
Extended Height :	13.1'	13.2'
Retracted Height:	58.3"	59.7"
Max top load :	55 pounds	55 pounds
Base tube diameter :	3.5" (90mm)	3.5" (90mm)
Number of sections :	Four	Four
Max wind speed :	75 mph / 372 in ²	75 mph / 372 in ²

Non-Rotating Tower		
Part Number	Description	Price
CL6419NA	Fixed (Non-Rotating)	\$ 3,764
GC.30901	Set of 3 guy collars - fixed on dia 51mm - 2"	\$ 67

Manual Rotation Tower		
Part Number	Description	Price
CL6419TA	Manual Rotating Base	\$ 4,016
GC.30802	Set of 3 rings on turnable guy collars on dia 51mm 2"	\$ 156

Tower Options		
Part Number	Description	Price
RP.30602.T (3)	Guy ropes - 32 ft (10 m)	\$ 315
PK.30701 (3)	Standard Pickets	\$ 204
HA.31301	5 lb. Hammer	\$ 21
TP.35500	Bag for carrying ropes and pickets	\$ 126
FB.33800	Lookup Light	\$ 310
BK.30104	Lower Mounting Bracket	\$ 62
BK.30055	Square Roof Bracket	\$ 199
BK.30204	Upper Mounting Bracket	\$ 125
MS.32302	Reversed micro-switch	\$ 131

Internal Cable Options	
See Page 58	Cable must be less than 1.7" Diameter



Tower Model CL6419N

Lights, Cameras, and Communications

We're an OEM

Tempest Fireco Towers is an OEM for all major lighting manufacturers as well as many camera and communication manufacturers. Choose from popular brand names such as Havis-Shields, Fire Research Corporation, Tele-Lite, and Intec or R-Vision cameras, and also from our own Fireco brand of quality lighting products.